

# Technical Data Sheet

## AlphaLISA® SureFire® Ultra™ ERK 1/2 Total Assay Kit

**ALSU-TERK-A500, ALSU-TERK-A10K, ALSU-TERK-A50K, ALSU-TERK-A-HV**

### **Kit-Specificity**

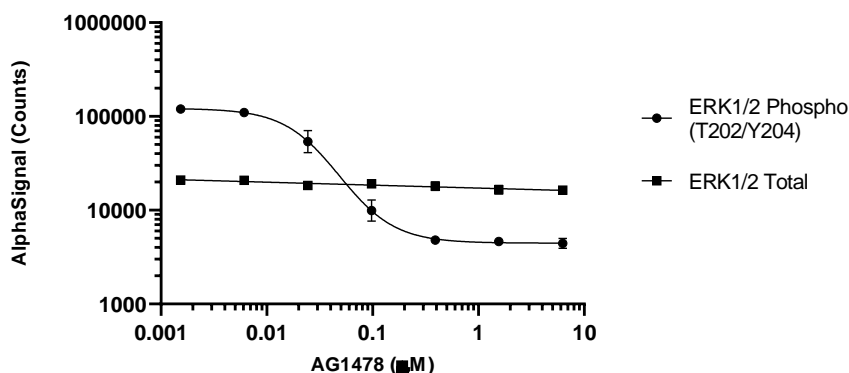
This assay kit contains antibodies which recognize invariant epitopes on ERK1/2. The protein detected by this kit correspond to UniProt ID P28482. ERK1/2 is also known as Mitogen-activated protein kinase 1 (MAPK1). These antibodies recognize ERK 1/2 of human, mouse and rat origin. Other species should be tested on a case-by-case basis.

### **Control Lysate Information**

Positive Control Lysate: Prepared from A431 cells, cultured to confluence in T175 flasks in 10% FBS containing medium, then treated with 200 ng/mL EGF for 10 minutes and lysed in 10mL of 1X *SureFire Ultra* Lysis Buffer.

### **Representative Data**

Data obtained with a 2-plate, 2-incubation protocol. HeLa cells were plated at 40K cell per well in a 96 well plate and incubated overnight. Cells were treated with AG1478 at the indicated concentrations for 2 hours prior to activation with 1 ng/mL EGF for 30 minutes. Cells were lysed with 1x Lysis Buffer and assayed separately for Total or Phospho (T202/Y204) ERK1/2 with respective *SureFire Ultra* kits. Equivalent to approximately 4000 cells/datapoint.



For more information and detailed protocols, please refer to the generic AlphaLISA *SureFire Ultra* Assay Kits Manual, available from <http://www.perkinelmer.com/category/alpha-surefire-kits>