

DATA INTEGRITY IS AT THE HEART OF LABORATORY COMPLIANCE

DATA MUST FOLLOW ALCOA+ PRINCIPLES



SCIENTISTS NEED TO PROVE THE INTEGRITY OF THEIR DATA RISK HAVING THEIR LABORATORIES CITED - OR EVEN SHUT DOWN.

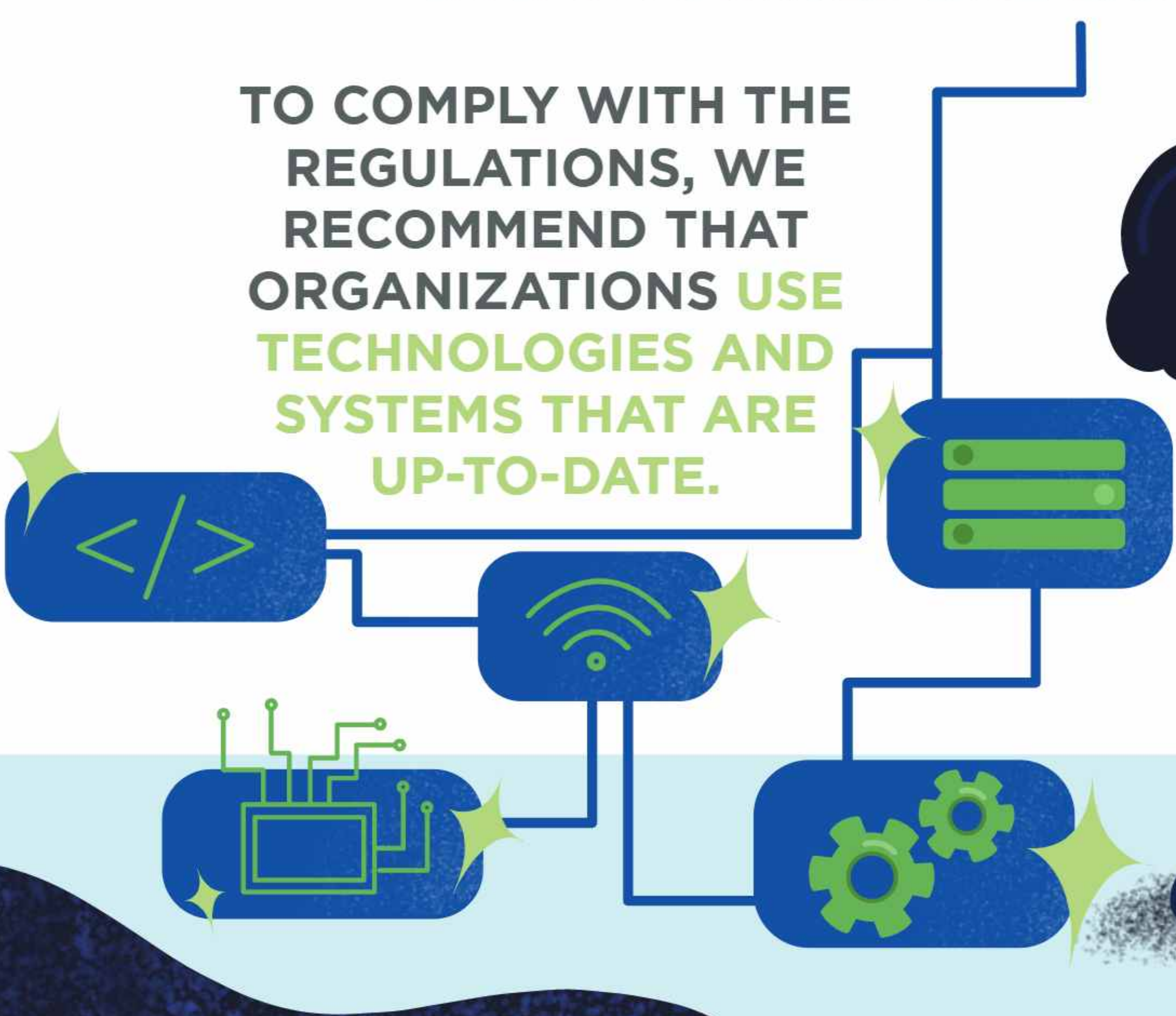


LACK OF FAMILIARITY WITH THE COMPLEX GUIDELINES SET BY GLOBAL REGULATORY AGENCIES CAN INCREASE THE RISK OF AUDIT FINDINGS.



NON-SUPPORTED SYSTEMS CAN LEAD TO CYBER SECURITY RISKS.

TO COMPLY WITH THE REGULATIONS, WE RECOMMEND THAT ORGANIZATIONS USE TECHNOLOGIES AND SYSTEMS THAT ARE UP-TO-DATE.



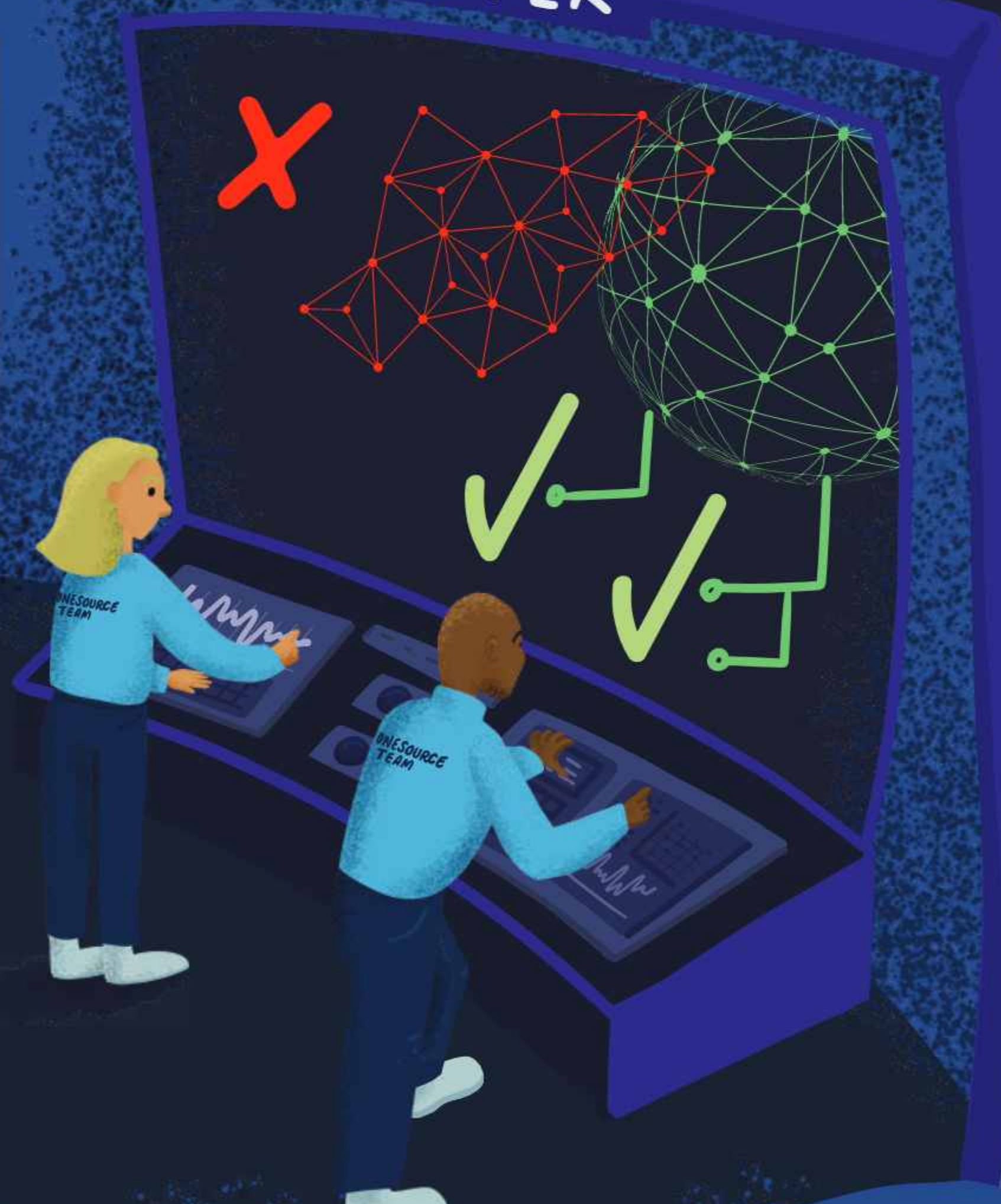
TYPES OF DATA TO TRACK ARE IMPORTANT TOO. ELECTRONIC DATA IS MORE SECURE AND LESS LIKELY TO BE MANIPULATED WHEN TRACKING THE LIFECYCLE OF PRODUCTS AND PROCESSES.

DATA INTEGRITY MANAGEMENT ASSOCIATED WITH IT PLATFORMS IS ENORMOUS AND COMPLEX AND MUST MEET CGMP, GDP, 21 CFR PART 11 ER/ES REQUIREMENTS AND ALCOA+ PRINCIPLES.



ONESOURCE COMMAND CENTER

GCMP ✓
GDP ✓
21 CFR PART 11 ✓
ER/ES ✓



IT IS IMPORTANT TO HAVE A GLOBAL DATA MANAGEMENT AND GOVERNANCE POLICY.

WE RECOMMEND ADOPTION OF A GLOBAL, COMPREHENSIVE RISK-BASED APPROACH TO COMPLIANCE THAT BUILDS QUALITY INTO PROCEDURES AND PRODUCTS PROACTIVELY RATHER THAN REACTIVELY.

THE SOLUTION: AN EFFECTIVE, GLOBAL PROGRAM FOR MANAGING DATA INTEGRITY:



ONESOURCE

DEPLOYING PROVEN SOLUTIONS TO MITIGATE AND PREVENT RISK

OUR EXPERTS CAN:



IMPLEMENT DI SOLUTIONS



DATA MUST FOLLOW ALCOA+ PRINCIPLES



ONESOURCE: THE RIGHT INVESTMENT IN A PROACTIVE SOLUTION

CONTACT US TODAY:
WWW.PERKINELMER.COM/ONESOURCE