

Technical Data Sheet

AlphaLISA® SureFire® Ultra™ Human p-Aurora B (Thr232) Detection Kit

ALSU-PAURB-A500, ALSU-PAURB-A10K, ALSU-PAURB-A50K, ALSU-PAURB-A-HV

Kit Specificity

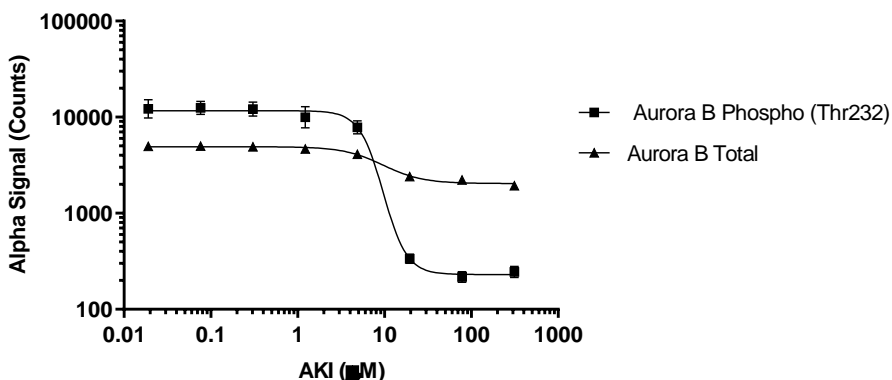
This assay kit contains antibodies which recognize the phospho-Thr232 epitope and a distal epitope on Aurora B. The protein detected by this kit corresponds to UniProt ID Q96GD4. Aurora B is also known as Aurora Kinase B, AURKB and ARK2. These antibodies recognize Aurora B of human origin. Other species should be tested on a case-by-case basis.

Control Lysate Information

Positive Control Lysate: Prepared from A549 cells grown to confluence in T175 flasks in 10% FBS containing medium, then treated with 50 nM Calyculin A and 2 μ M PMA for 90 minutes at 37°C. Cells were lysed in 4 mL of *SureFire Ultra* Lysis Buffer.

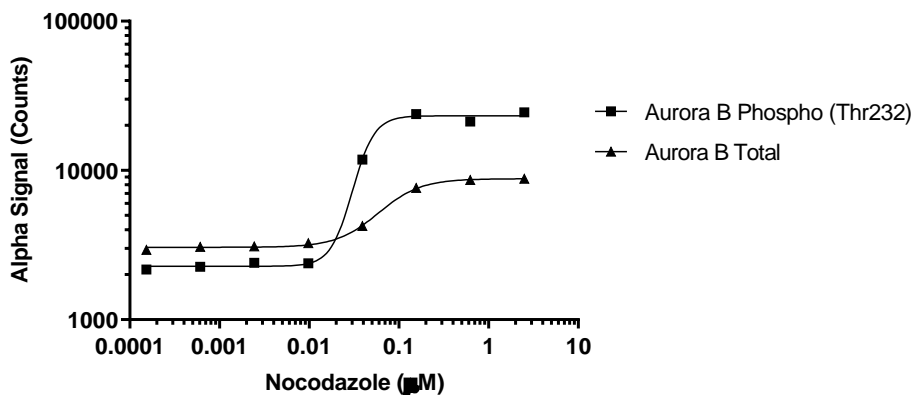
Representative Data

Data obtained with a 2-plate, 2-incubation protocol. Hela cells were plated overnight at 20K cells/well in a 96 well plate and treated with 330 nM Nocodazole for 20 hours. Cells were then treated with Aurora Kinase Inhibitor at the indicated concentrations for 2 hours. Cells were lysed with *SureFire Ultra* Lysis Buffer and assayed separately for Phospho (Thr232) and Total Aurora B, using respective *SureFire Ultra* kits. Equivalent to approximately 2,000 cells/datapoint.



Technical Data Sheet

Data obtained with a 2-plate, 2-incubation protocol. A549 cells were plated overnight at 20K cells/well in a 96 well plate. Cells were then treated with Nocodazole at the indicated concentrations for 18 hours. Cells were lysed with *SureFire Ultra* Lysis Buffer and assayed separately for Phospho (Thr232) and Total Aurora B, using respective *SureFire Ultra* kits. Equivalent to approximately 2,000 cells/datapoint.



For more information and detailed protocols, please refer to the generic AlphaLISA *SureFire Ultra* Detection Kits Manual, available from <http://www.perkinelmer.com/category/alpha-surefire-kits>