

HUMAN HEALTH

ENVIRONMENTAL HEALTH



# COMPLETE CONTROL AT YOUR FINGERTIPS



Web-Based, Open-Access Mass Spectrometry Software





OPEN THE DOOR  
TO EASIER  
MASS SPECTROMETRY  
FOR ALL



# ACCESSIBLE ROBUST INTUITIVE



AxION® eDoor™ is the open-access software solution for today's fast-paced laboratory. It is designed to operate and optimize the management of multiple locations, multiple types of analyses, multiple scientists of the entire skill set range as well as multiple instrument types from a variety of different vendors. The walk-up access provided by AxION eDoor automatically leads scientists through sample submission, method selection and reporting options, making mass spectrometry accessible to everyone under one simple interface.

## **Managers Gain Greater Control and Convenience:**

- Streamline training—AxION eDoor works with any manufacturer's LC/MS instrumentation, eliminating the need for users to learn multiple software packages.
- Prevent user error and expedite analysis by fully automating your laboratory's LC/MS workflow.
- Monitor analyses and results remotely.

## **Users Appreciate Greater Ease-of-Use and Efficiency:**

- Avoid backlogs with automatic instrument assignment.
- Clear, intuitive operation with a well-organized, modern design.
- Simplify mass spectrometry analysis in four clearly defined steps.



## **Web-Based Software Allows Easy, Remote Access**

AxION eDoor offers full remote access over the Internet—secure within your firewall. With fast and easy navigation, it simplifies the lives of lab managers, administrators and end users/chemists without compromising on analytical flexibility.



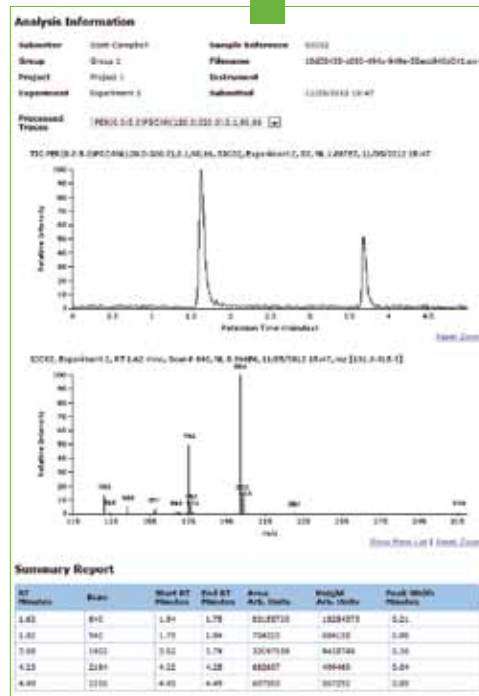
# GREATER CONTROL FOR ADMINISTRATORS

With the powerful AxION eDoor package, assigned system administrators can manage who does what, when and how, while monitoring every analysis from any location.

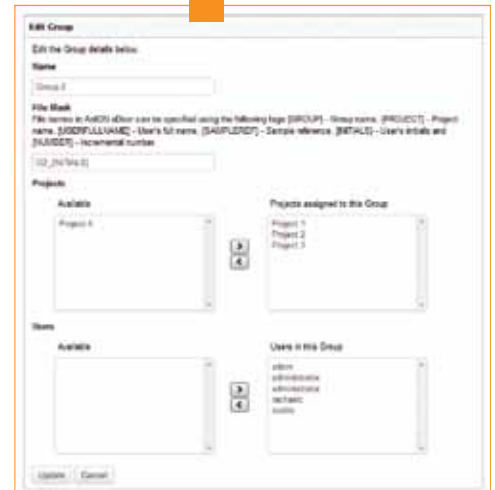
The result is full control of sample management, greater analytical consistency and reliability, and faster throughput.



AxION eDoor allows administrators to easily monitor and track instrument usage.



Administrators can create easily definable reports that can be customized based on specific laboratory needs.



The Groups setting ties together specific users with specific projects to easily manage who is receiving and viewing reports for each set of samples.



### Set Up the System

- Customize templates to predefine user sample submission information.
- Define instrument acquisition parameters.
- Assign post-processing methods for each analysis.
- Add a report to complete sample analysis.

### Assign User Privileges

- Assign users to particular groups or projects.
- Define instruments, methods and data for each user.

### Monitor and Manage

- Set up system-wide or user-specific alerts for instruments not available or if sample submission information is not complete.
- Create report templates based on instrument, method or group for simplified, automated invoicing.
- Assign analysis to a specific instrument for optimization of laboratory operation.
- Create automatic raw data archiving on a remote server for greater security, easy access and reduced storage on instruments or desktops.
- Track instrument usage to effectively schedule preventive maintenance.
- Review analysis information for individual users, groups, sites or projects, at any time, from any location.



### AxION eCipher™—Mass Spectral Data Processing

Included in the AxION eDoor software suite, this comprehensive post-processing utility provides optimized workflows for sample-to-sample comparison, component analysis, quantitation and library searches for data generated from any LC/MS software platform.

# FASTER SIMPLER ACCESS FOR USERS



Everyone from first-time users to experienced chemists can work faster, easier and more efficiently with AxION eDoor. Each step is clearly defined. Every field, clearly visible. Settings and parameters are pre-programmed for each application.

With one simple, intuitive interface, users are now up and running in minutes. They no longer have to spend time learning software for all instruments in the laboratory.



AxION eDoor's intuitive touch screen interface simplifies sample submission...

...and results are sent via email once an analysis is complete.

## SIMPLE STEPS FOR WALK-UP ENVIRONMENTS

Enter your sample, get a barcode and select your method.

Scan your barcode at the instrument, and place your sample in its assigned position.

Push the confirmation button on the touch screen.

Receive and review results through email on your computer or mobile device.

# POWERFUL DETECTION BETTER INSIGHTS

Integrate AxION eDoor with PerkinElmer Mass Spectrometers to optimize productivity and efficiency. AxION eDoor works with both the AxION 2 TOF MS and Flexar™ SQ 300 MS to deliver high quality mass spectrometry results no matter what your workflow or how complex your samples.



## Flexar SQ 300 MS—Single Quadrupole Detector for Detailed Sample Insight

- Grounded ESI and Field-Free APCI sources to analyze any compound.
- Super soft ionization provides molecular weight information for a wide range of structures.
- Rapid acquisition, ideal for HPLC and UHPLC applications.
- Easy and fast cleaning and maintenance—no tools required.



## AxION 2 TOF MS—Time-of-Flight Detector for Exact Mass Performance with Wide Dynamic Range

- Full spectrum analysis on every measurement, providing complete sample information.
- TrapPulse™ technology for exceptional sensitivity without compromising resolution or mass accuracy.
- Integrates with fast LC separations to deliver better signal-to-noise ratios and higher throughput.
- Adjustable, angled probe design allows users to optimize ionization and ion transmission for enhanced sensitivity.
- Enables faster maintenance with a capillary that can be changed without breaking vacuum.

Both the AxION 2 TOF MS and Flexar SQ 300 MS have interchangeable snap-in probes that can be dedicated to a particular user or application, minimizing cross-contamination and maximizing productivity.



The Flexar SQ 300 MS and AxION 2 TOF MS with AxION eDoor software—identifying, quantifying and confirming compounds has never been done with such ease, speed and confidence.



The AxION Separation Probe can be attached to the interchangeable ionization probes, allowing chromatography to be performed directly on the source for minimized dead volumes, increased resolution of peaks and higher sensitivity.

# THE NUMBER ONE NAME IN SERVICE AND SUPPORT

Nothing has a greater impact on productivity or return on investment than instrument uptime. And no one does more to ensure your chromatography and mass spectrometry systems perform day in and day out than PerkinElmer.

With OneSource® Laboratory Services, you have the world's largest and most respected global service and support network at your disposal. We go beyond just maintenance and repair of instrumentation. We incorporate laboratory asset management as part of our customers' business equation—a partner with proven results in improving efficiencies, optimizing operations and providing cost certainty across the globe. No matter what you need, our team of certified, factory-trained Customer Support Engineers is just a phone call away, 24 hours a day, seven days a week.

Operating in more than 150 countries with more than 400,000 assets currently under care, OneSource offers the most comprehensive portfolio of professional laboratory services in the industry, including complete care programs for virtually every technology and manufacturer. By allowing you to consolidate all your service contracts under a single supplier, and by providing responsive, expert technical advice and support at a moment's notice, we ensure your instrumentation—and your lab—is running at optimum levels at all times.

Whether it's care and repair, validation and compliance, asset management and laboratory relocation, software and hardware upgrades or education and training, OneSource is... the ONE you can count on.



PerkinElmer, Inc.  
940 Winter Street  
Waltham, MA 02451 USA  
P: (800) 762-4000 or  
(+1) 203-925-4602  
[www.perkinelmer.com](http://www.perkinelmer.com)



For a complete listing of our global offices, visit [www.perkinelmer.com/ContactUs](http://www.perkinelmer.com/ContactUs)

Copyright ©2012, PerkinElmer, Inc. All rights reserved. PerkinElmer® is a registered trademark of PerkinElmer, Inc. All other trademarks are the property of their respective owners.

009819A\_01

Printed in USA