

CASECENTER | Secure Online Data Sharing and Storage of Digital Pathology Images

Customize to your organization and gain instant access online!

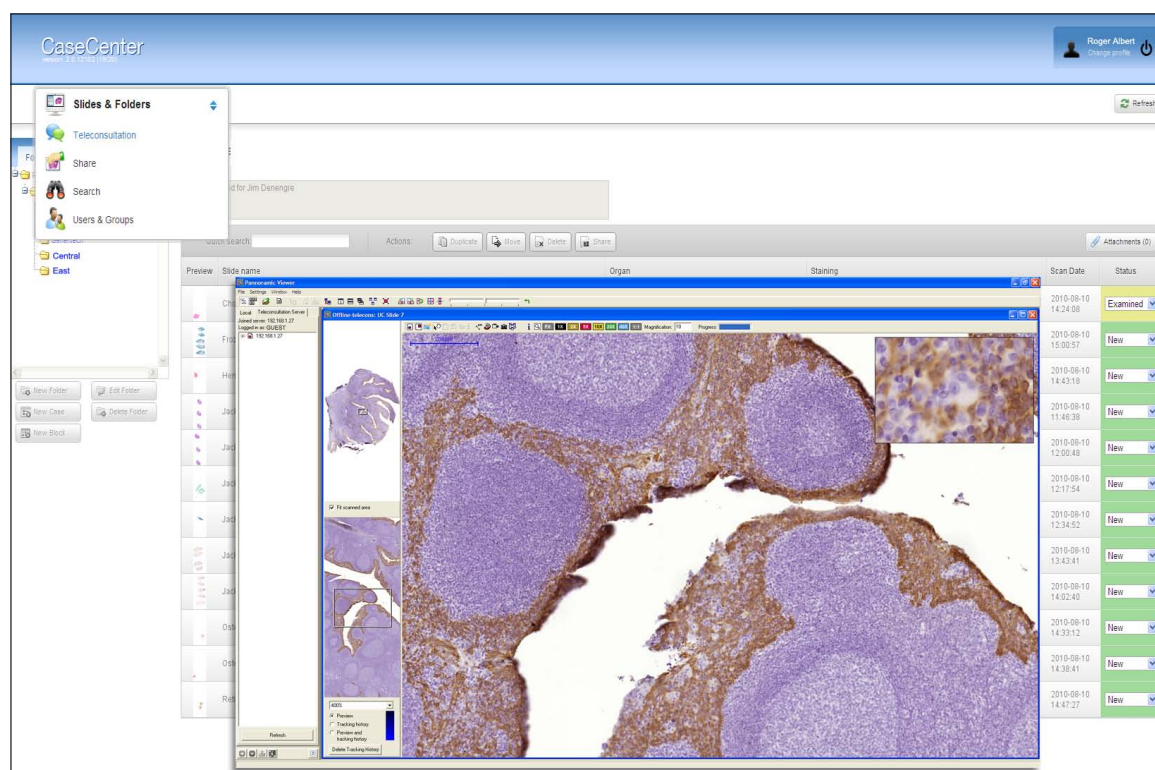
Share and access images via your own intranet or over the internet using the powerful and flexible CaseCenter™. The storage and accessibility of large image files is a growing issue for many organizations. CaseCenter is uniquely capable of managing large image files and data effectively, storing them securely and allowing access from virtually anywhere in just a matter of seconds. Unlike other similar packages, it operates like Google Earth, allowing real-time upload and download of remotely gathered data through an intermediary secure service unit. It also features easy customization open teleconsultation for second opinions, and it can run invisibly behind your organization's LIS portal.

Teleconsultation can occur from any location that has an internet connection. Images and data remain secure as access is restricted to those receiving an invitation from a CaseCenter seat owner. Images with saved annotations and data can be easily viewed by clicking on the image thumbnail within CaseCenter. A third party wishing to access the images can do so using a free Java Viewer or a free copy of the Pannaromic Viewer software from www.3dhistech.com.

Both access and setup can be constructed and maintained using multi-tiered accounts, to provide the needed flexibility to suit your organization, whether that be a single-site laboratory or a multi-location facility.

Benefits

- Teleconsultation
- Real-time upload and download of images
- Centralized database
- Archiving
- User-level assignments



EASY SETUP AND ONLINE ACCESS

STEP 1

INSTALL CASECENTER ONTO A HOST SERVER

It is highly recommended to load CaseCenter onto a host server with a minimum of a terabyte of storage capacity. A service unit should be placed in close proximity to the scanner. The service unit acts as a data transfer station, allowing for the extremely fast upload and download of images.

STEP 2

OPTIMIZE WORKFLOW TO YOUR ORGANIZATION

CaseCenter can be setup so that it works seamlessly behind your organization's LIS portal. Access images directly from a patient record.

STEP 3

ASSIGN USER AND GROUP LOG-INS

Administrator-level access allows for assignments of users and groups. Tier access and visibility based upon your organization's infrastructure. All entries are identified by user, and stamped with a date and time for historical reference.

STEP 4

COPY CASES OR SCAN DIRECT TO SITE

Images and data can be automatically scanned to CaseCenter, making remote viewing immediate, or any images or projects can be copied at a later date.

STEP 5

TELECONSULT WITH ANY THIRD PARTY

Share images with others in your organization, or invite a third party to view them with a secured invitation. For third parties, it is not necessary to purchase software to view images. Images can be opened by clicking on the image in the CaseCenter project using either Pannaromic Viewer or JavaViewer, both of which are free.

Annotations and measurements can be saved and viewed via this portal.