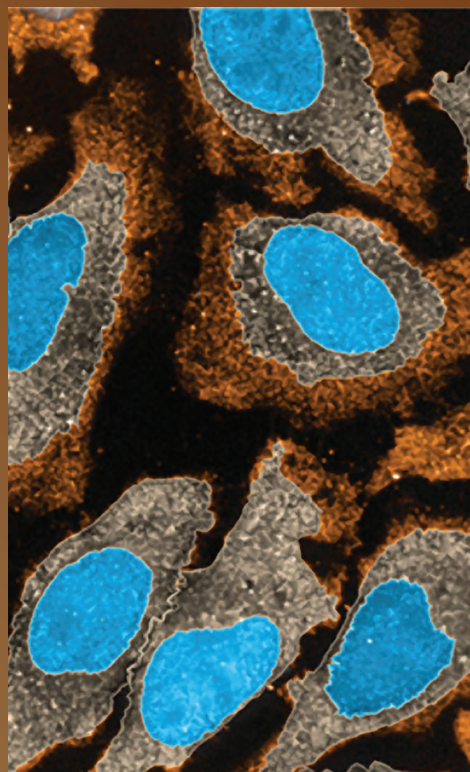


HUMAN HEALTH

ENVIRONMENTAL HEALTH



WEB-ENABLED  
IMAGE MANAGEMENT.  
ACCESS, STORE AND  
**EXPLORE.**

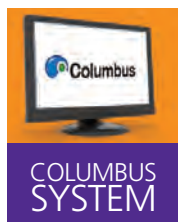
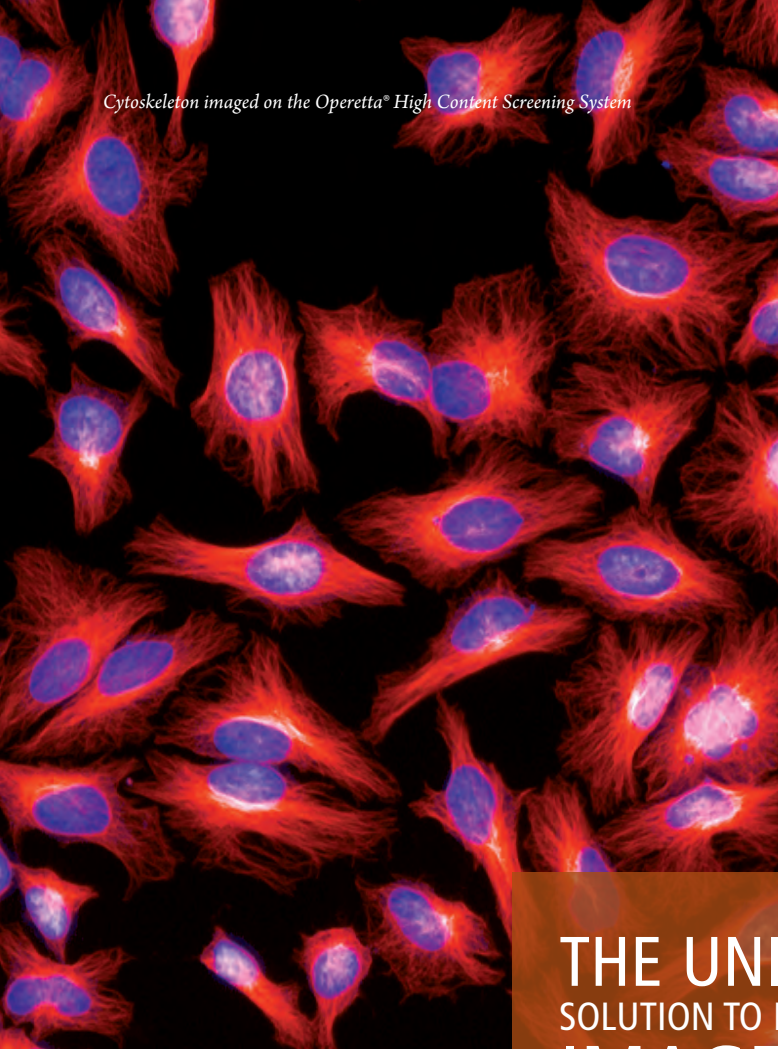


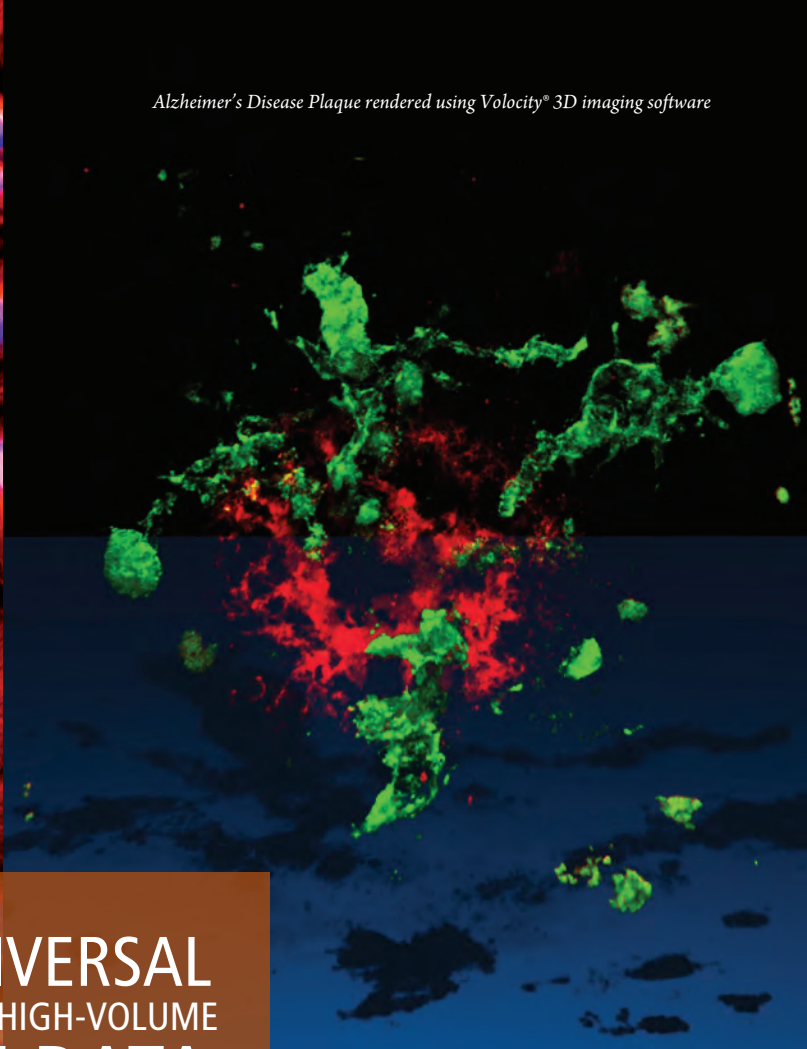
Image Data Management and Analysis System



*Cytoskeleton imaged on the Operetta® High Content Screening System*

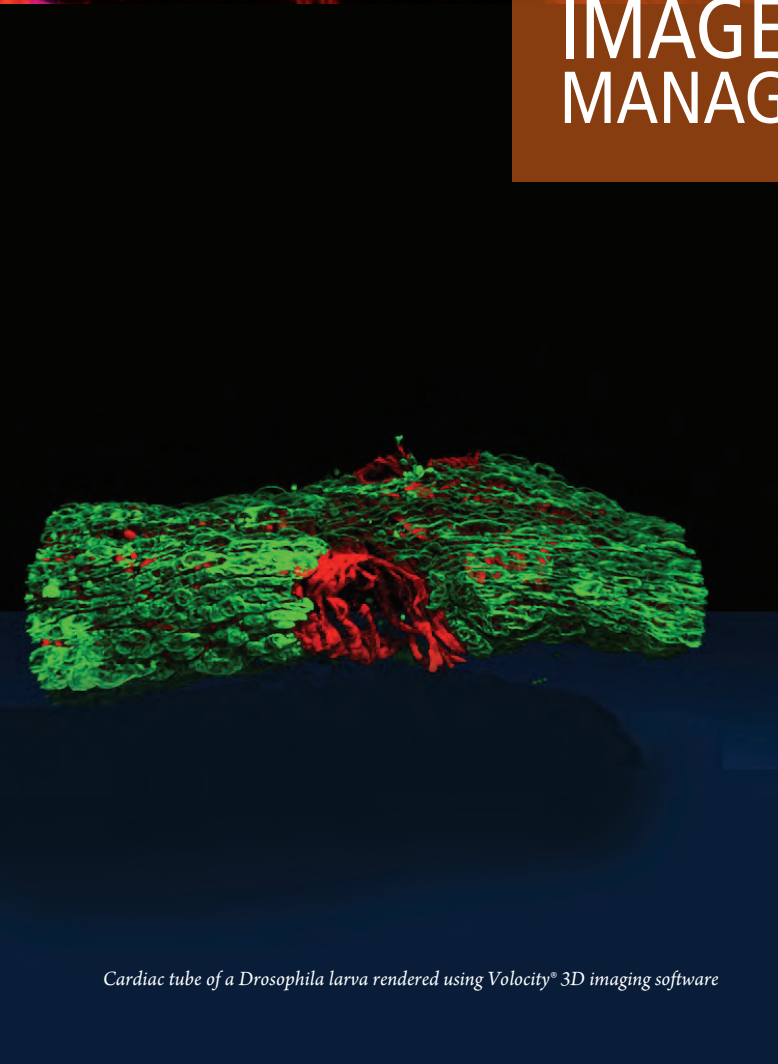


*Alzheimer's Disease Plaque rendered using Velocity® 3D imaging software*

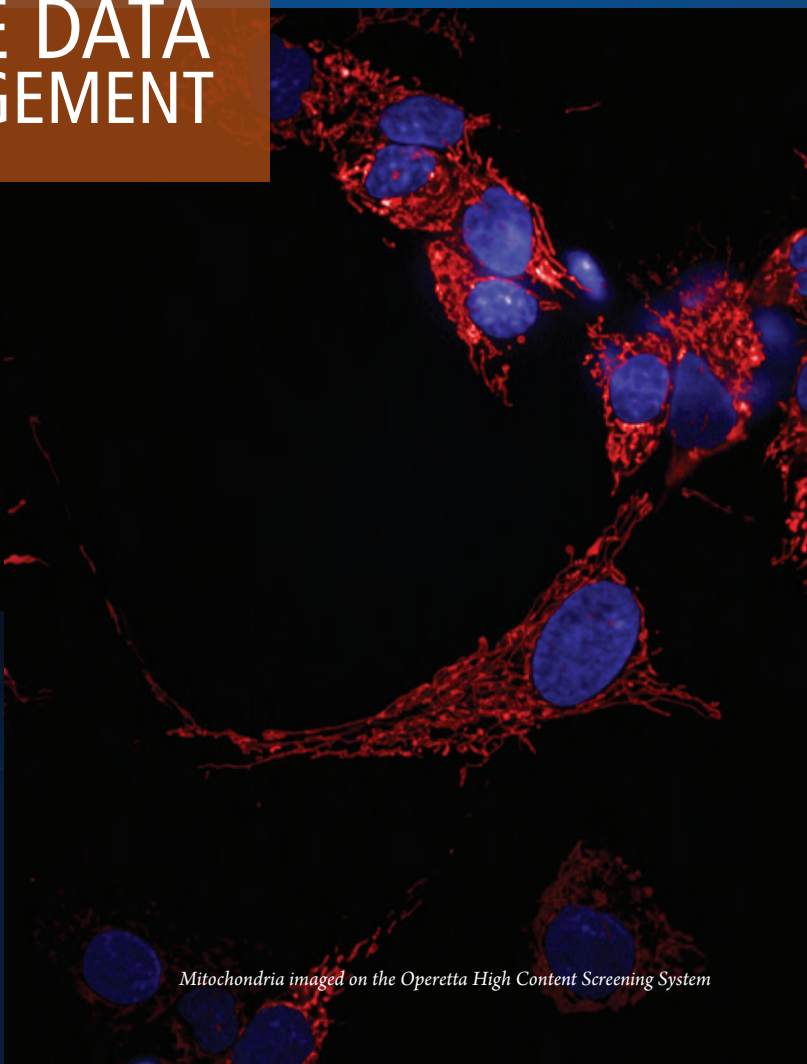


THE UNIVERSAL  
SOLUTION TO HIGH-VOLUME  
IMAGE DATA  
MANAGEMENT

*Cardiac tube of a Drosophila larva rendered using Velocity® 3D imaging software*



*Mitochondria imaged on the Operetta High Content Screening System*





## A powerful new way to access, store and explore data – whatever the source.

Scientists working with images generate massive amounts of data that need to be accessed quickly, analyzed and re-analyzed, shared with colleagues and stored safely. But managing that data has been difficult and limiting. Until now.

Columbus is the first universal high-volume image data management and analysis system that brings fast, secure access to images from a wide range of sources via the Internet. Columbus lets scientists remotely manage, view, annotate and measure multidimensional images from anywhere in the world. The system can serve an unlimited number of users simultaneously, making it perfect for any size unit from an individual lab to an entire organization. Columbus eliminates the task of filing and the risk of losing data. It acts as a central location where image data is stored with associated metadata to give a complete and enduring picture of any experiment.

PerkinElmer's cellular imaging and analysis solutions are built around scientists and the way you want to work.





# UNLIMITED ACCESS TO SET YOUR RESEARCH FREE

Versatile and easy to use, Columbus® takes cellular imaging and analysis to a new level. Once captured, store, retrieve, analyze, share – no matter what you want to do with your images and data, Columbus gives you the tools. Web- and cloud-enabled, Columbus can serve an entire lab or facility with a single installation. It's the most flexible, scalable, cost-effective solution commercially available today.

## Powerful features. Outstanding benefits.

<b>Web-enabled</b>	➤ Provides unlimited user access to online images and data from any computer without software installation
<b>Unlimited user access with one license</b>	➤ Provides a tool for the entire organization and a framework for consistent data management
<b>Image analysis software included</b>	➤ Offers the option to analyze/re-analyze data on local workstation or switch to the powerful processing capability of the server computer
<b>Intuitive user interface</b>	➤ Enables short learning curves and fast results
<b>Technical support desk</b>	➤ Provides access to a dedicated team of imaging experts on a global help desk to support your software and applications
<b>Easy server installation</b>	➤ Enables users to start within a day
<b>OME-compatible</b>	➤ Allows visualization of images regardless of origin
<b>Wide range of biological images</b>	➤ Acts as a central repository for all images and image data – HCS, microscopy, medical, etc.
<b>Flexible range of interfaces</b>	➤ Exports to Excel® and PowerPoint®, interfaces with Accelrys® Pipeline Pilot, IDBS ActivityBase™ and Volocity®
<b>Database searchable by metadata, image annotations and descriptions</b>	➤ Provides access to data quickly and easily whatever the search parameters
<b>Client server application that supports Windows®, Mac® and Linux® OS</b>	➤ Enables management and analysis of images from existing computers, regardless of local operating system

# THE POWER TO DISCOVER IS AT YOUR FINGERTIPS

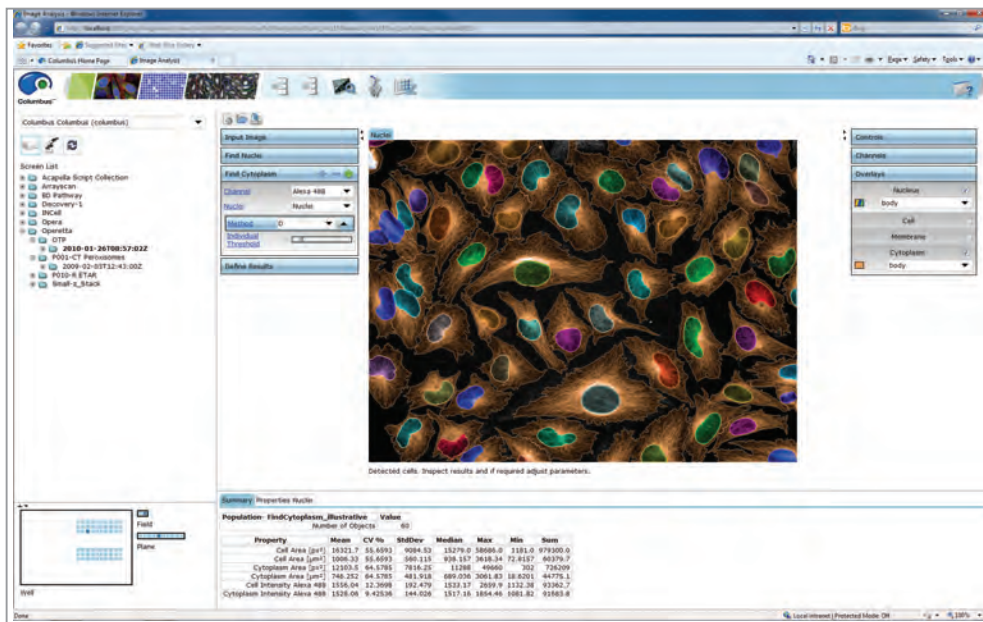
Columbus is the only image data management and analysis system fully compliant with the Open Microscopy Environment (OME). Using OME's OMERO server, Columbus can support a wide range of file formats, allowing visualization of images whatever their origin. Users can browse images by relational information. Multichannel data can be explored by individual channel or merged images. The entire history of an experiment can be reviewed. Images can be exported in standard file formats for use in other media such as PowerPoint®.

Columbus makes it easy to open your research to greater discovery. It's the universal solution to your cellular imaging and analysis needs.

## High-speed image analysis with ready-to-use solutions.

Jump-start your analysis. Columbus includes a highly sophisticated yet easy-to-use image analysis software that can recognize and categorize different types of cells in a variety of ways including shape, size, texture and behavior. Its pre-configured application solutions, or "scripts," let you analyze new images or re-analyze images from past experiments at your desktop.

- Provides fast, flexible and easy image analysis
- Available to all Columbus users; no additional licenses needed
- Includes a comprehensive range of algorithms optimized for cell type, staining and imaging condition



Columbus's intuitive interface makes it easy to navigate through its many data management and analysis options.

Columbus is part of a PerkinElmer Complete Solution that also includes dedicated technical support and regular software updates.



We can help you solve your image data management challenges.  
Please visit us at [www.perkinelmer.com/imaging](http://www.perkinelmer.com/imaging).

PerkinElmer, Inc.  
940 Winter Street  
Waltham, MA 02451 USA  
P: (800) 762-4000 or  
(+1) 203-925-4602  
[www.perkinelmer.com](http://www.perkinelmer.com)



For a complete listing of our global offices, visit [www.perkinelmer.com/ContactUs](http://www.perkinelmer.com/ContactUs)

Copyright © 2010, PerkinElmer, Inc. All rights reserved. PerkinElmer® is a registered trademark of PerkinElmer, Inc. All other trademarks are the property of their respective owners.

008364B\_01

Printed in USA

Jun. 2010