

HUMAN HEALTH

ENVIRONMENTAL HEALTH

MICROFLUIDICS CHARGE VARIANT ASSAY 68 SECONDS ANALYSIS TO RESULTS

LabChip® GX II Touch Charge Variant Assay: Fastest results, from clone selection to formulation

PerkinElmer
LabChip® GX II Touch
technology delivers

identification of Basic and Acidic variants relative to the Main Peak of recombinant monoclonal antibodies (mAb) with 15x faster results than conventional IEX and can calculate relative percentages of variants automatically. Greater throughput means you can optimize valuable research time to accelerate your drug to the clinic.

- Run up to 384 samples (LabChip GXII Touch HT) or 24 samples (LabChip GXII Touch 24) for optimal efficiency
- Analysis run times selectable at either 68, 90, or 110 seconds
- Sample and chip preparation < 30min
- Sample pI range: ~7.0 - 9.5
- Resolution: comparable to IEX and conventional CZE
- Consistent, reproducible results: CV < 5% for fixed input sample concentration
- Easy assignment of Basic and Acidic variant peaks relative to the Main mAb peak

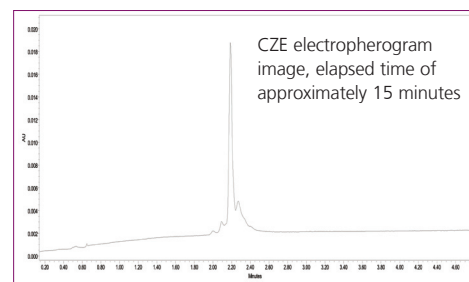
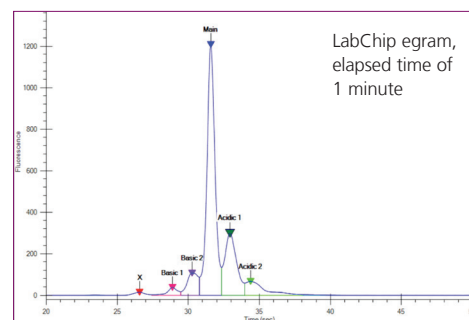
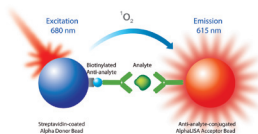


Figure 1: Comparison of LabChip HT Charge Variant Assay (top), and traditional CZE assay (bottom). Basic region migrates faster than Main Peak, Acidic region migrates more slowly. User names peaks using system callouts for Expected Peaks. Tabulate % relative amount of each variant.



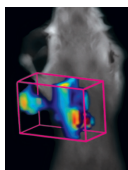
Alpha Technology
Operetta® High Content
Imaging System



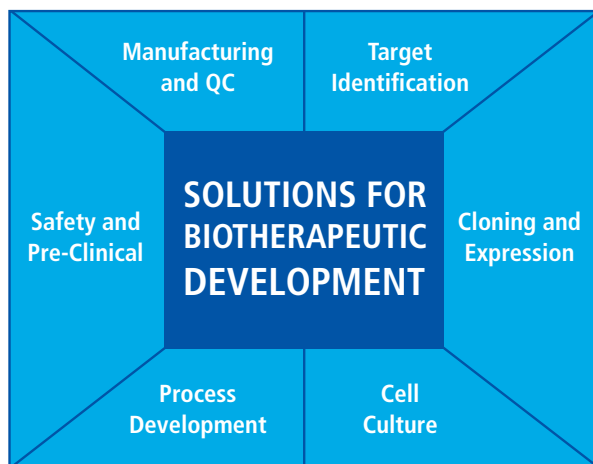
UltraView® VoX 3D
Live Cell Imaging System



Fluorescent Agents,
in vivo



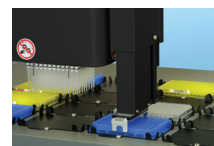
IVIS® and FMT™
in vivo imaging solutions



EnSight® Multimode
Plate Reader



Microplates



Sciclone® G3 Automated
Workstation



LabChip GXII Touch Protein
Analysis and Quantitation System



JANUS® BioTx Workstation

SPECIFICATIONS

Sample Type	Monoclonal antibody (mAb)
pI Range	7.0 - 9.5
Amount of Sample Required	25 µl with concentration between 0.5 - 10 mg/mL (12.5 µg to 250 µg of mAb, total) Optimal concentration: 2 mg/mL
Resolution	Comparable to IEX and conventional CZE
Reproducibility	CV < 5% for varying concentration from 1 - 3 mg/mL CV < 3% at constant concentration
Carryover	< 0.5% of previous sample can be detected in following sample
Assay Run Time	1.8 - 3 hr for 96-well plate Three Assay durations, 68 s, 90 s, 110 s
Number of Samples per Kit	120 samples
Number of Samples per Chip Prep	96 samples
Chip Life Time	500 samples per chip

ORDER INFORMATION

PART NO.

LabChip 5K/RNA/CZE Chip	760435
HT Protein Charge Variant Reagent Kit	CLS760670

For more information please visit www.perkinelmer.com/LabChip

PerkinElmer, Inc.
940 Winter Street
Waltham, MA 02451 USA
P: (800) 762-4000 or
(+1) 203-925-4602
www.perkinelmer.com



For a complete listing of our global offices, visit www.perkinelmer.com/ContactUs

Copyright ©2012-2014, PerkinElmer, Inc. All rights reserved. PerkinElmer® is a registered trademark of PerkinElmer, Inc. All other trademarks are the property of their respective owners.

010542A_01