

Research Use Only. Not for use in diagnostic procedures.

## Phosphorylated SLP-76 (S376) LANCE *Ultra* Cellular Detection Kit

Product number: TRF4010

### ○ Contents

○ Product Information.....	2
○ Quality Control .....	3
○ Analyte of Interest .....	3
○ Description of the LANCE <i>Ultra</i> Assay .....	3
○ Kit Content: Reagents and Materials .....	4
○ Recommendations .....	5
○ Assay Procedure.....	6
○ Data Analysis .....	9
○ Assay Performance Characteristics.....	10
○ Additional Resources .....	11

## ○ Product Information

### Application:

This kit is designed for the detection of phosphorylated SLP-76 (S376) in cell lysates using a homogeneous LANCE *Ultra* assay (no wash steps).

### Typical Performance

#### (Undiluted positive control

#### lysate versus Buffer):

Signal/Background: 12.5

Z': 0.90

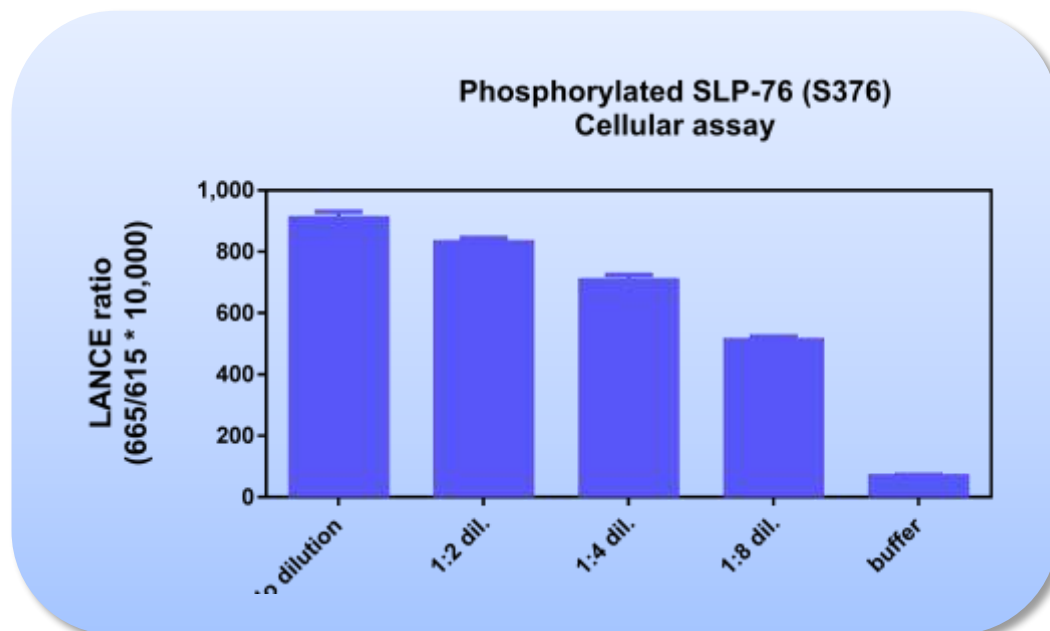


Figure 1. Typical positive control lysate (Jurkat cells stimulated with H<sub>2</sub>O<sub>2</sub>) diluted in lysis buffer. The data was generated using a white Optiplate™-384 microplate and read on an EnVision™ Multilabel Plate Reader equipped with TR-FRET laser option. Total signal, signal/background window, and sensitivity may vary with other instruments. Positive control lysate is not supplied with the kit and must be purchased separately.

### Storage:

Store kit in the dark at +4°C.

### Stability:

This kit is stable for at least 6 months from the manufacturing date when stored in its original packaging and the recommended storage conditions.

## ○ Quality Control

Lot to lot consistency is confirmed in a LANCE *Ultra* assay. S/B and Z' were measured on the EnVision Multilabel Plate Reader equipped with TR-FRET laser option. We certify that these results meet our quality release criteria. Maximum counts, Signal/Background, and Z' values may vary between lots and instrument used. For quality control purposes, Z' is calculated by comparing 12 replicates of undiluted positive lysates versus 12 replicates of lysis buffer. Data is calculated and presented ratiometrically by dividing the signal at 665 nm by the signal at 615 nm and multiplied by 10,000.

## ○ Analyte of Interest

Lymphocyte cytosolic protein (SLP-76) is required for T-cell activation and has been implicated in a number of signaling pathways. SLP76 is phosphorylated at Ser376 by HPK1, and this phosphorylation leads to a decrease in T-cell receptor signaling.

## ○ Description of the LANCE *Ultra* Assay

LANCE® and LANCE® (Lanthanide chelate excite) *Ultra* are homogeneous (no wash) TR-FRET (time-resolved fluorescence resonance energy transfer) technologies. One antibody of interest is labeled with a donor fluorophore (a LANCE Europium chelate) and the second antibody is labeled with an acceptor fluorophore [ULight™ dye]. Upon excitation at 320 or 340 nm, energy can be transferred from the donor Europium chelate to the acceptor fluorophore if sufficiently close for FRET (~10 nm). This results in the emission of light at 665 nm. Data is represented as ratiometric (665/615 nm X 10,000).

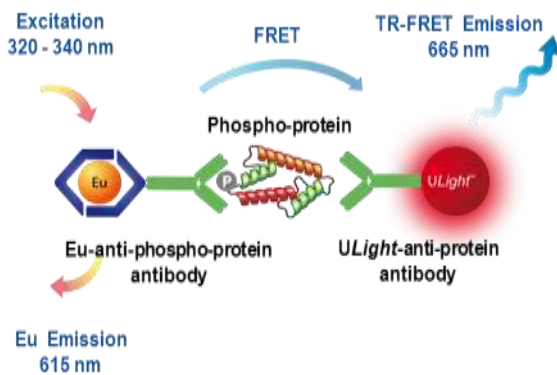


Figure 2. LANCE assay principle

○ **Kit Content: Reagents and Materials**

Kit components	TRF4010C (500 assay points**)	TRF4010M (10 000 assay points**)
LANCE <i>Ultra</i> Eu-labeled Anti-SLP-76 (S376) Antibody stored in TSA, 0.1% BSA	10 µL @ 500 nM (1 clear tube, yellow cap)	120 µL @ 500 nM (1 clear tube, yellow cap)
LANCE <i>Ultra ULight</i> -labeled Anti-SLP-76 Antibody stored in TSA, 0.1% BSA	60 µL @ 500 nM (1 brown tube, blue cap)	1200 µL @ 500 nM (1 brown tube, green cap)
LANCE Detection Buffer (10X) *	1.8 mL, 1 small bottle	250 mL, 1 large bottle
LANCE <i>Ultra</i> Lysis Buffer 1 (5X)	2 mL, 1 small bottle	100 mL, 1 large bottle

\* Extra detection buffer can be ordered separately (cat # CR97-100C: 1.8 mL or cat # CR97-100: 250 mL). Extra Lysis Buffer can be ordered separately (cat # TRF001C: 10 mL or cat # TRF001F: 100 mL).

\*\* The number of assay points is based on an assay volume of 20 µL in 384-well assay plates using the kit components at the recommended concentrations.

Sodium azide should **not** be added to the stock reagents. High concentrations of sodium azide (> 0.001 % final in the assay) might decrease the signal.

## Specific additional required reagents and materials:

The following materials are recommended:

Item	Suggested source	Catalog #
VICTOR™ X, VICTOR Nivo™, ViewLux®, EnVision, EnSight™, EnSpire® Multilabel Plate Reader equipped with TR-FRET option	PerkinElmer Inc.	Please consult our website-
TopSeal-A PLUS Adhesive Sealing Film	PerkinElmer Inc.	6050185
Tissue culture treated clear SpectraPlates™, for culturing cells when using the 2-plate protocol	PerkinElmer Inc.	6005650
White OptiPlate-384, for LANCE <i>Ultra</i> detection assays when using the 2-plate protocol	PerkinElmer Inc.	6007290
White CulturPlate-384 when using the 1-plate protocol	PerkinElmer Inc.	6007680
Positive Control Cell Lysate (NIH3T3 cells stimulated with PDGF-AA)	PerkinElmer Inc.	TRF4010S

## ○ Recommendations

### General recommendations:

- The volume indicated on each tube is guaranteed for single pipetting. Multiple pipetting of the reagents may reduce the theoretical amount left in the tube.
- Re-suspend all reagents by vortexing before use.
- Centrifuge all tubes before use to improve recovery of content (2000x g, 10-15 sec).
- Use Milli-Q® grade H<sub>2</sub>O (18 MΩ•cm) to dilute Detection and Lysis Buffers.
- When diluting the samples, change tips between each standard or sample dilution. When loading reagents in the assay microplate, change tips between each standard or sample addition and after each set of reagents.
- When reagents are added to the microplate, make sure the liquids are at the bottom of the well.
- Small volumes may be prone to evaporation. It is recommended to cover microplates with TopSeal-A Adhesive Sealing Films to reduce evaporation during incubation. LANCE *Ultra* TR-FRET assays cannot be read with the TopSeal-A Film attached. Please remove before reading.
- LANCE signal can be detected using a VICTOR X, ViewLux, EnVision, EnSpire, VICTOR NIVO, or EnSight Multilabel Reader equipped with TR-FRET. Use an excitation wavelength of 320 or 340 nm to excite the LANCE Europium chelate. We recommend you read this assay in dual emission mode, detecting both the emission from the Europium donor fluorophore at 615 nm, and the acceptor fluorophore (at 665 nm for *ULight* dye). The 665/615 nm x 10,000 calculation is used to process your data.
- Signal will vary with temperature and incubation time. For consistent results, identical incubation times and temperatures should be used for each plate.
- The representative data shown in this technical data sheet are provided for information only.

### Cell Handling and Lysis recommendations:

- Evaporation can be problematic with cells cultured in microtiter plates. For overnight incubation, it is recommended to add warm PBS or sterile water to unused wells. For longer incubation periods, a sterile breathable sealing membrane (Corning, cat. #3345) can be used to cover the plate. Alternatively, cells can be cultured in larger wells, and/or in a larger volume of culture medium.
- Phosphatase Inhibitors such as NaF and activated  $\text{Na}_3\text{VO}_4$  can be added to lysis buffers to protect kinases without affecting LANCE detection.
- An incubation of 30 minutes is usually sufficient for cell lysis. However, the optimal lysis incubation time should be determined by each investigator using a time course study.
- A starving step with serum-free medium may be required depending on your target/cell line and should be evaluated in a separate experiment.
- For 2-plate protocols with adherent cells: cell seeding densities of 40K cells/well are usually sufficient for most cell lines. However, optimization of cell seeding density is recommended.
- For 1-plate protocols with suspension cells: Cell seeding densities of 100K cells/well are usually sufficient for most cell lines. However, optimization of cell seeding density is recommended.

### ○ Assay Procedure

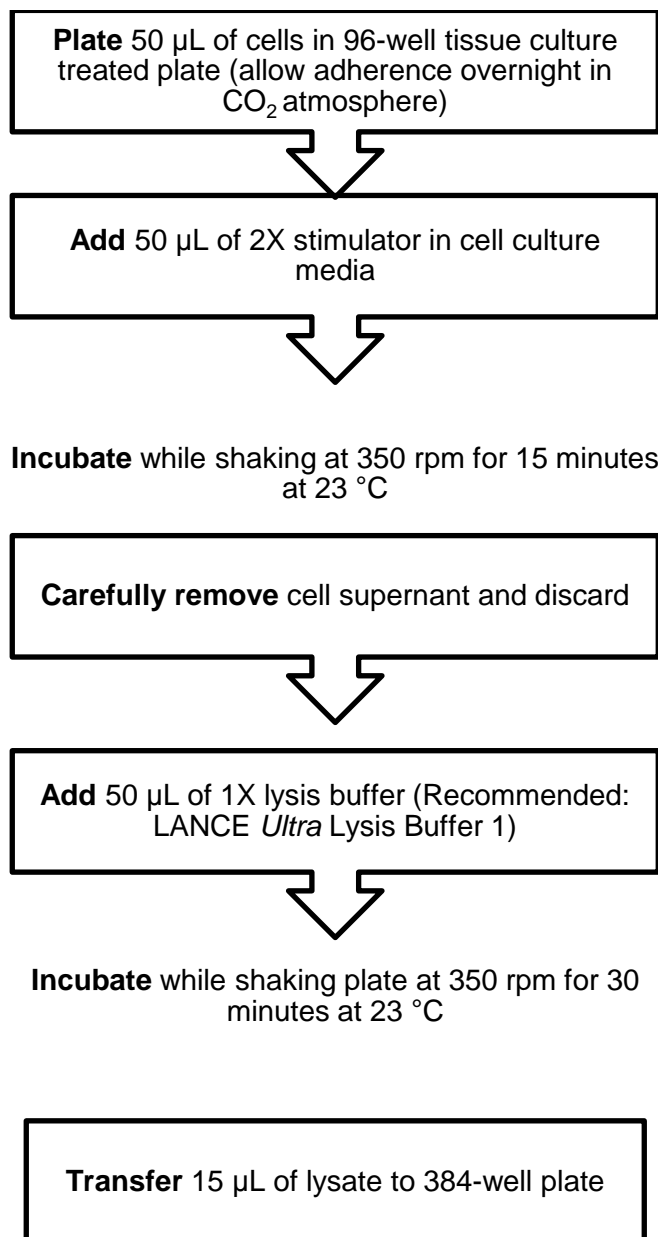
Format	# of data points	Volume			Plate recommendation
		Final	Sample	Eu-Antibody/ <i>ULight</i> -Antibody MIX	
TRF4010C	250	40 $\mu\text{L}$	30 $\mu\text{L}$	10 $\mu\text{L}$	White OptiPlate-96 (cat # 6005290) White $\frac{1}{2}$ AreaPlate-96 (cat # 6005560)
	500	20 $\mu\text{L}$	15 $\mu\text{L}$	5 $\mu\text{L}$	White OptiPlate-384 (cat # 6007290) White CulturPlate-384 (cat # 6007680)
	1 250	8 $\mu\text{L}$	6 $\mu\text{L}$	2 $\mu\text{L}$	ProxiPlate™-384 Plus (cat # 6008280) White OptiPlate-384 (cat # 6007290) White CulturPlate-384 (cat # 6007680)
	2 500	4 $\mu\text{L}$	3 $\mu\text{L}$	1 $\mu\text{L}$	White OptiPlate-1536 (cat # 6004290)
TRF4010M	10 000	20 $\mu\text{L}$	15 $\mu\text{L}$	5 $\mu\text{L}$	White OptiPlate-384 (cat # 6007290) White CulturPlate-384 (cat # 6007680)
	25 000	8 $\mu\text{L}$	6 $\mu\text{L}$	2 $\mu\text{L}$	ProxiPlate-384 Plus (cat # 6008280) White OptiPlate-384 (cat # 6007290) White CulturPlate-384 (cat # 6007680)
	50 000	4 $\mu\text{L}$	3 $\mu\text{L}$	1 $\mu\text{L}$	White OptiPlate-1536 (cat # 6004290)

**General Lysis Protocol:** Cells are lysed in 1X lysis buffer.

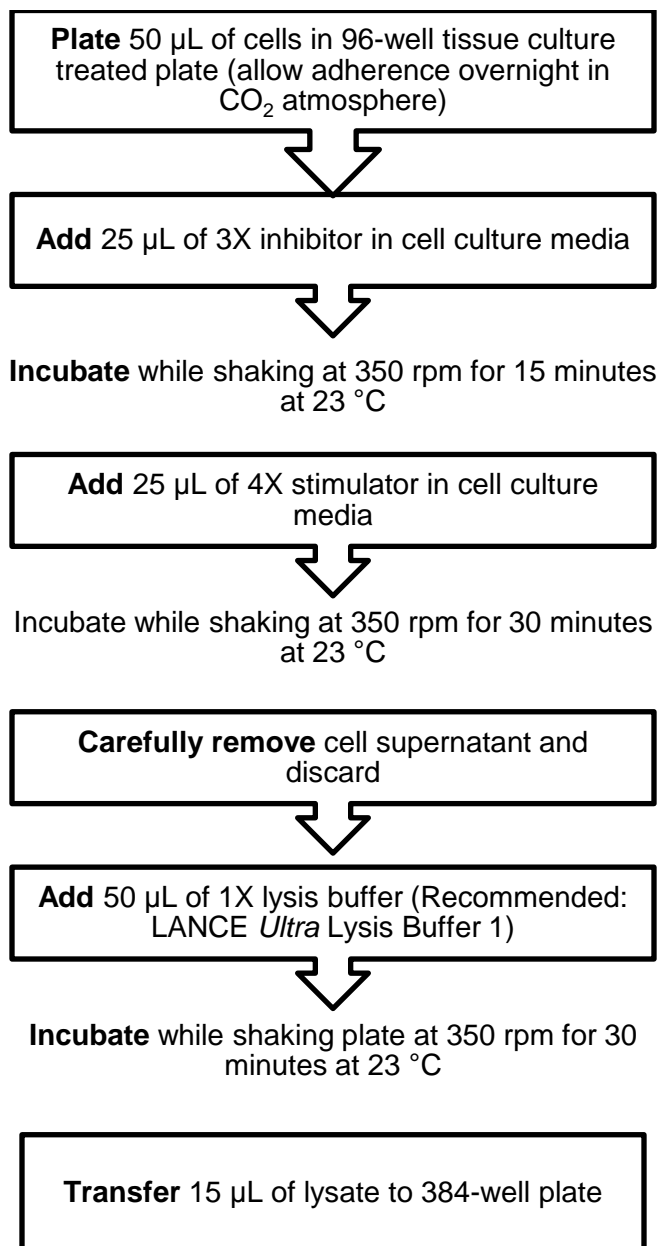
**Each protocol described below is designed for 500 assay points.**

**Lysate Preparation (2-plate protocol for adherent cells):**

**Stimulation:**



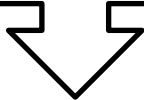
**Inhibition:**



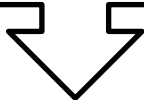
## Lysate Preparation (1-plate protocol for suspension cells):

### Stimulation:

**Plate 8  $\mu$ L of cells in 384-well OptiPlate**

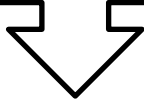


**Add 4  $\mu$ L of 3X stimulator in cell culture media**



**Incubate** while shaking at 350 rpm for 15 minutes at 23 °C

**Add 3  $\mu$ L of 5X lysis buffer (Recommended: LANCE *Ultra* Lysis Buffer 1)**



**Incubate** while shaking plate at 350 rpm for 30 minutes at 23 °C

### Inhibition:

**Plate 8  $\mu$ L of cells in 384-well Optiplate**



**Add 2  $\mu$ L of 5X inhibitor in cell culture media**



**Incubate** while shaking at 350 rpm for 15 minutes at 23 °C

**Add 2  $\mu$ L of 6X stimulator in cell culture media**



**Incubate** while shaking at 350 rpm for 30 minutes at 23 °C

**Add 3  $\mu$ L of 5X lysis buffer (Recommended: LANCE *Ultra* Lysis Buffer 1)**



**Incubate** while shaking plate at 350 rpm for 30 minutes at 23 °C



## Reagent Preparation:

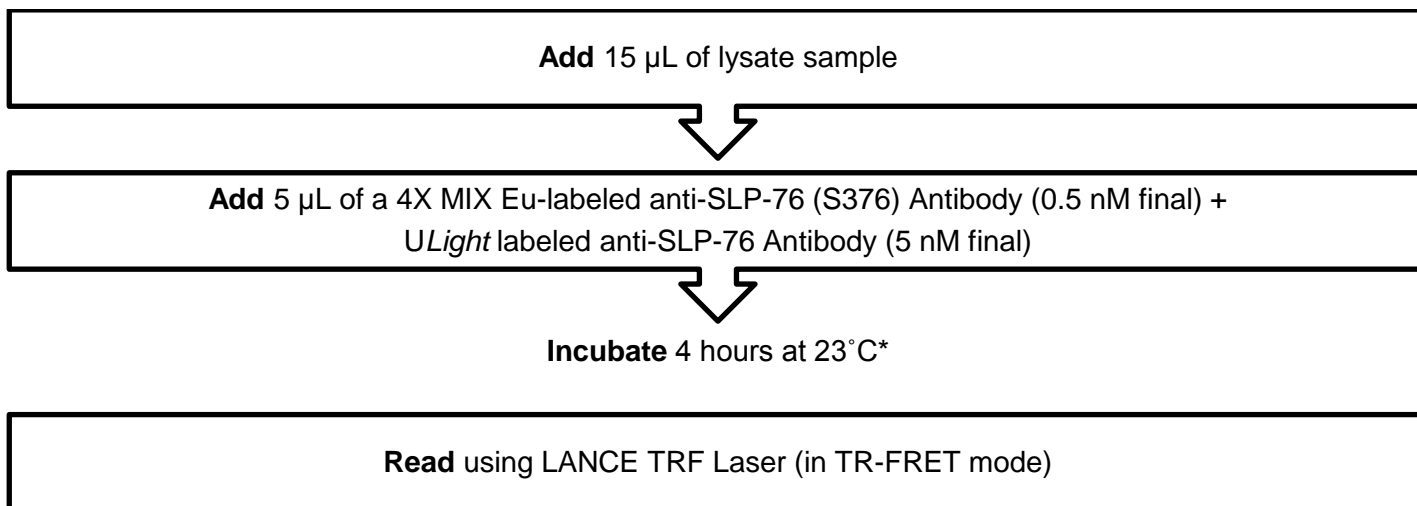
### 1) Preparation of 1X LANCE Detection Buffer:

- a. Add 1 mL of 10X LANCE Detection Buffer to 9 mL H<sub>2</sub>O.

### 2) Preparation of 4X MIX Eu-labeled anti-SLP-76 (S376) Antibody (2 nM) + *ULight* labeled anti-SLP-76 Antibody (20 nM):

- a. Prepare just before use.
- b. Add 10 µL of 500 nM Eu-labeled anti-SLP-76 (S376) Antibody and 100 µL of 500 nM *ULight*-labeled anti-SLP-76 Antibody to 2390 µL of LANCE Detection Buffer

### 3) In a white Optiplate (384 wells):



**\*In order to reduce evaporation, we recommend covering the OptiPlate with TopSeal-A PLUS during the incubation. Longer incubation times can be used and in some cases may improve assay signal/background.**

**Important:** LANCE signal is detected using an EnVision Multilabel Reader equipped with a TR-FRET laser. Use an excitation wavelength of 320 or 340 nm to excite the LANCE Europium chelate. We recommend you read this assay in dual emission mode, detecting both the emission from the Europium donor fluorophore at 615 nm, and the acceptor fluorophore (at 665 nm for *ULight* dye). Data is calculated and presented ratiometrically by dividing the signal at 665 nm by the signal at 615 nm and multiplying by 10,000.

## ○ Data Analysis

- Data is represented ratiometrically. Divide the signal at 665 nm by the signal at 615 nm and multiply by 10,000.
- Analyze data according to a nonlinear regression using the 4-parameter logistic equation (sigmoidal dose-response curve with variable slope) and a 1/Y<sup>2</sup> data weighting (the values at maximal concentrations of analyte after the hook point should be removed for correct analysis).

## ○ Assay Performance Characteristics

LANCE Ultra assay performance described below was determined using the 2-plate protocol.

### Dose Response Curve:

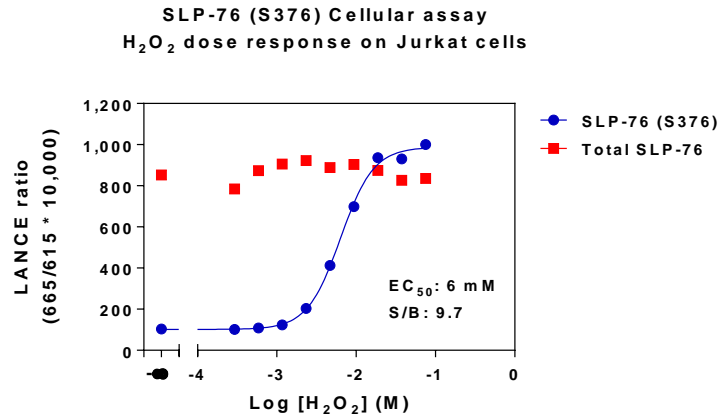


Figure 3: Dose Response Curve Jurkat cells stimulated with H<sub>2</sub>O<sub>2</sub>. Jurkat cells (200K/well) were treated with increasing concentrations of H<sub>2</sub>O<sub>2</sub> for 15 minutes prior to lysis with LANCE Ultra Lysis Buffer 1 for 30 minutes at room temperature.

## Assay Robustness (Z'):

The assay was tested with Stimulated and Unstimulated cell lysates in multiple replicates (n=36) and a Z' score was determined.

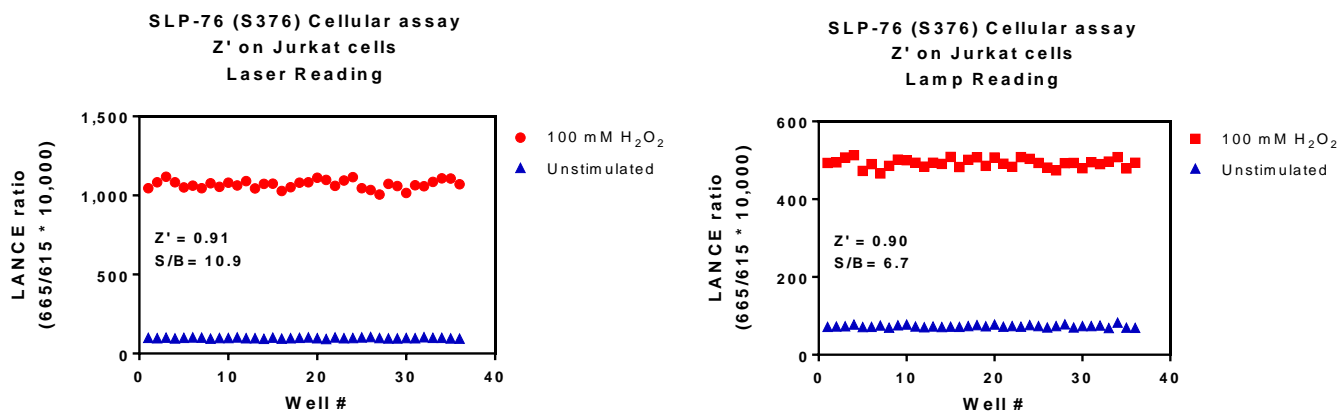


Figure 5: Z' determination in Stimulated versus Unstimulated cell lysates read using laser or lamp configuration. Jurkat cells (200K/well) were treated with 100 mM H<sub>2</sub>O<sub>2</sub> for 15 minutes prior to lysis with LANCE *Ultra* Lysis Buffer 1 for 30 minutes at room temperature. The same plate was read using both the TR-FRET laser or lamp options.

## Additional Resources

For more information on optimizing LANCE *Ultra* Cellular Detection Assays follow the link below:

<http://www.perkinelmer.com/LANCECellGuide>

You will find additional information regarding LANCE *Ultra* Assays at:

<http://www.perkinelmer.com/askLANCE>

**FOR RESEARCH USE ONLY. NOT FOR USE IN DIAGNOSTIC PROCEDURES**

**This product is not for resale or distribution except by authorized distributors.**

**LIMITED WARRANTY:** PerkinElmer warrants that, at the time of shipment, the above named product is free from defects in material and workmanship and conforms to the specifications set forth above. PerkinElmer makes no other warranty, express or implied with respect to the product and expressly disclaims any warranty of merchantability or fitness for any particular purpose. Notification of any breach of the foregoing warranty must be made within 60 days of receipt of the product, unless otherwise provided in writing by PerkinElmer. No claim shall be honored if the customer fails to notify PerkinElmer within the period specified. The sole and exclusive remedy of the customer for any breach of the foregoing warranty is limited to either the replacement of the non-conforming product or the refund of the invoice price of the product. PERKINELMER SHALL NOT BE LIABLE FOR ANY DIRECT, INDIRECT, SPECIAL, INCIDENTAL, CONSEQUENTIAL OR PUNITIVE DAMAGES, WHETHER BASED ON CONTRACT, TORT, STRICT LIABILITY OR OTHERWISE, ARISING OUT OF THE DESIGN, MANUFACTURE, SALE, DELIVERY, OR USE OF THE PRODUCTS, EVEN IF THE LIMITED REMEDIES PROVIDED HEREIN FAIL OF THEIR ESSENTIAL PURPOSE OR PERKINELMER IS ADVISED OF THE POSSIBILITY OF SUCH DAMAGES.

PerkinElmer, Inc.  
940 Winter Street  
Waltham, MA 02451 USA  
P: (800) 762-4000 or  
(+1) 203-925-4602  
[www.perkinelmer.com](http://www.perkinelmer.com)

For a complete listing of our global offices, visit [www.perkinelmer.com/ContactUs](http://www.perkinelmer.com/ContactUs)

Copyright © 2012, PerkinElmer, Inc. All rights reserved. PerkinElmer® is a registered trademark of PerkinElmer, Inc. All other trademarks are the property of their respective owners.