

Microplates

# Deepwell LumaPlate™-96

96-Well, White, Scintillator coated



## Description

The Deepwell LumaPlate-96 is a solid scintillator coated, 96-well microplate that eliminates the need for adding LSC cocktail. This deepwell version has a sample working volume of 300 µL. For analysis of non-volatile samples, simply dispense samples into the standard Deepwell LumaPlate wells, dry down and count on a microplate scintillation counter, such as the Perkin-Elmer TopCount® or MicroBeta®.

The LumaPlate's solid scintillator simplifies single and dual label CPM/DPM counting by eliminating variable chemical quench and in addition dramatically reduces total cost per sample. Deepwell LumaPlates are particularly suitable for samples produced from <sup>51</sup>Cr release assays, enzyme inhibition assays, organic extractions, chromatography fractions, and capillary electrophoresis fractions. Bar coded microplates are also available.

## Features & Benefits

- Sample volumes of up to 300 µL
- Very low backgrounds for greater sensitivity
- High counting efficiency for greater sensitivity
- No variable chemical quench for maximum signal output
- Easy to use with reproducible results
- No liquid radioactive waste - reduces disposal costs

▶ ISOTOPIC	FLUORESCENCE
COLORIMETRIC	LUMINESCENCE

Material .....	Polystyrene
Sterile .....	No
Lids .....	No
Tissue culture treated .....	No
Filter type .....	Not applicable
Bar code .....	Optional
White writing area .....	Not applicable

## Typical Applications

- HPLC fraction analysis
- Larger sample volumes (up to 300 µL)
- Enzyme inhibition assay
- <sup>51</sup>Cr release assay

## Recommended Companion Products

Microplate sealing:

- TopSeal™-A 6005185
- TopSeal-S 6005161
- MicroMate™ heat sealing system (for TopSeal-S)

Instrumentation:

- TopCount Microplate Scintillation and Luminescence Counter
- MicroBeta Microplate Scintillation and Luminescence Counter

## Ordering Information

**Deepwell LumaPlate-96, 96-well, White, Scintillator Coated**

Case of 50 **6005630**

Bar code labeled Deepwell LumaPlates are available.  
Contact your local PerkinElmer representative for details.

## Technical Information

### Material:

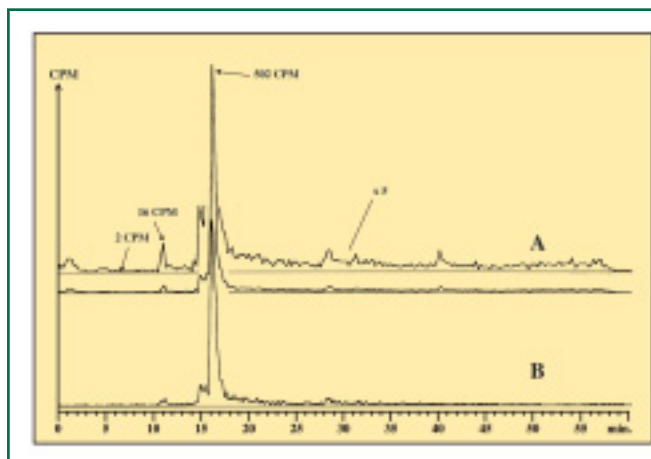
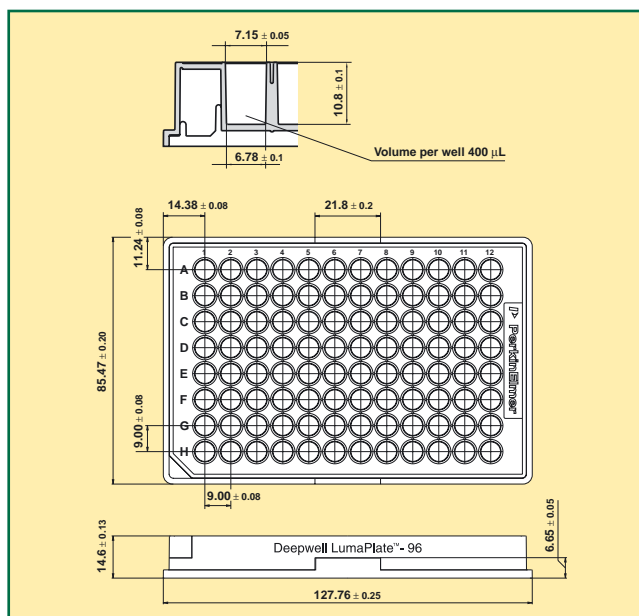
Polystyrene with white colorant.  
Scintillator layer on well bottom.

### Dimensions (Tolerances):

Length	127.76 mm	( ± 0.25 mm)
Width	85.47 mm	( ± 0.20 mm)
Height	14.60 mm	( ± 0.13 mm)
Well diameter	7.15 mm	
Well depth	10.80 mm	
Well volume (nominal)	400 µL	
A1 offset to top	11.24 mm	( ± 0.08 mm)
A1 offset to side	14.38 mm	( ± 0.08 mm)

## Experimental Results

The chromatogram below (Figure 3) shows the result of two HPLC runs of the same rat urine. Curve B represents a 100 µL injection with 61,500 DPM of <sup>3</sup>H labeled drug and its metabolites measured on-line using the Perkin-Elmer Radiomatic™ Model 505TR flow scintillation analyzer. Curve A represents a 7 µL injection with only 4,300 DPM of total radioactivity measured off-line in a Deepwell LumaPlate-96 with the TopCount system. For better visualization, the upper curve of A was also expanded by a factor of five. When comparing the classical on-line and the new off-line approaches, it becomes clear that curve A shows much more detail than does curve B. In addition to using a 14-fold smaller injection volume, the TopCount/Deepwell LumaPlate-96 combination provides better sensitivity because of a much lower background, while maintaining very high counting efficiency. On a blank Deepwell LumaPlate-96, the background was determined to be only 0-2 CPM. Every count above 4 CPM can be interpreted as a valid tritium signal. It should also be noted that all peak intensities in both curves (A and B) compare well to each other. The main metabolite at a retention time of 16.5 minutes is clearly visible in both curves (A and B). This peak measured by the TopCount shows a better chromatographic resolution than the on-line chromatogram.



**Figure 3:** Radioactivity chromatogram of rat urine containing <sup>3</sup>H labeled drug;

- A = 4300 DPM (7 µL) injected and counted with the TopCount system (8 minutes per well).
- B = 61500 DPM (100 µL) injected and monitored on-line with adding 800 µL LSC-cocktail to a 100 µL mixing cell.

Reference: Packard Application Note AN004-TC



**Worldwide Headquarters:** PerkinElmer Life Sciences, 549 Albany Street, Boston, MA 02118-2512 USA (800) 551-2121

**European Headquarters:** PerkinElmer Life Sciences, Imperiastraat 8, BE-1930 Zaventem Belgium

**Technical Support:** in Europe: techsupport.europe@perkinelmer.com in US and Rest of World: techsupport@perkinelmer.com

**Belgium:** Tel: 0800 94 540 • **France:** Tel: 0800 90 77 62 • **Netherlands:** Tel: 0800 02 23 042 • **Germany:** Tel: 0800 1 81 00 32 • **United Kingdom:** Tel: 0800 89 60 46  
**Switzerland:** Tel: 0800 55 50 27 • **Italy:** Tel: 800 79 03 10 • **Sweden:** Tel: 020 79 07 35 • **Norway:** Tel: 800 11 947 • **Denmark:** Tel: 80 88 3477 • **Spain:** Tel: 900 973 255

LumaPlate, TopSeal, MicroMate and Radiomatic are trademarks and TopCount and MicroBeta are registered trademarks of PerkinElmer Life Sciences.

[www.perkinelmer.com/lifesciences](http://www.perkinelmer.com/lifesciences)