

Liquid Chromatography



Sonoma C18(2) HPLC Columns

Our Sonoma™ line is an equivalent to Phenomenex Luna™. Excellent efficiencies, peak shape and resolution are obtained for virtually all Luna HPLC applications from high quality Sonoma HPLC columns. A range of particle sizes offers versatility for capillary and LC/MS to prep and process scale applications. Sonoma C18(2), the most popular phase, is equivalent to Luna C18(2). Available in 3 µm and 5 µm particle sizes, with bulk and preparative material available. Other Sonoma phases are also available including C18, C5, C8, C8(2), Cyano, HILIC, NH2 (amino), PFP(2), Phenyl-Hexyl and Silica(2).

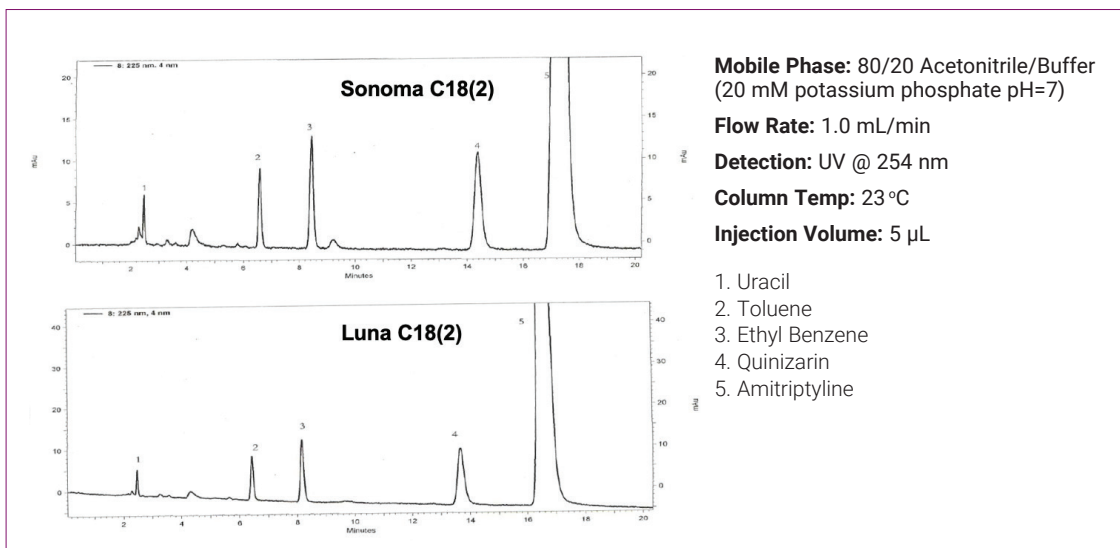


Figure 1: Sonoma C18(2) (top) and Luna C18(2) (bottom), 250 x 4.6 mm, 5 µm.

Table 1: Sonoma C18(2) specifications.

Phase	Length (mm)	ID (mm)	Particle Size (μm)	Part No.
Sonoma C18(2)	30	2.1	3	182121-SMA-C18(2)
Sonoma C18(2)	50	2.1	10	112321-SMA-C18(2)
Sonoma C18(2)	50	2.1	3	112121-SMA-C18(2)
Sonoma C18(2)	50	2.1	5	112221-SMA-C18(2)
Sonoma C18(2)	50	3.0	3	113121-SMA-C18(2)
Sonoma C18(2)	50	3.0	5	113221-SMA-C18(2)
Sonoma C18(2)	50	4.6	3	115121-SMA-C18(2)
Sonoma C18(2)	50	4.6	5	115221-SMA-C18(2)
Sonoma C18(2)	75	4.0	3	194121-SMA-C18(2)
Sonoma C18(2)	75	4.0	5	194221-SMA-C18(2)
Sonoma C18(2)	75	4.6	3	195121-SMA-C18(2)
Sonoma C18(2)	75	4.6	5	195221-SMA-C18(2)
Sonoma C18(2)	100	2.1	3	122121-SMA-C18(2)
Sonoma C18(2)	100	2.1	5	122221-SMA-C18(2)
Sonoma C18(2)	100	4.6	3	125121-SMA-C18(2)
Sonoma C18(2)	100	4.6	5	125221-SMA-C18(2)
Sonoma C18(2)	150	2.1	3	132121-SMA-C18(2)
Sonoma C18(2)	150	2.1	5	132221-SMA-C18(2)
Sonoma C18(2)	150	3.0	5	133221-SMA-C18(2)
Sonoma C18(2)	150	4.0	10	134321-SMA-C18(2)
Sonoma C18(2)	150	4.0	3	134121-SMA-C18(2)
Sonoma C18(2)	150	4.0	5	134221-SMA-C18(2)
Sonoma C18(2)	150	4.6	15	135B21-SMA-C18(2)
Sonoma C18(2)	150	4.6	3	135121-SMA-C18(2)
Sonoma C18(2)	150	4.6	5	135221-SMA-C18(2)
Sonoma C18(2)	200	4.6	5	145221-SMA-C18(2)
Sonoma C18(2)	250	2.1	10	152321-SMA-C18(2)
Sonoma C18(2)	250	2.1	5	152221-SMA-C18(2)
Sonoma C18(2)	250	4.0	10	154321-SMA-C18(2)

Table 1: Sonoma C18(2) specifications continued.

Phase	Length (mm)	ID (mm)	Particle Size (µm)	Part No.
Sonoma C18(2)	250	4.0	5	154221-SMA-C18(2)
Sonoma C18(2)	250	4.6	10	155321-SMA-C18(2)
Sonoma C18(2)	250	4,6	15	155B21-SMA-C18(2)
Sonoma C18(2)	250	4,6	3	155121-SMA-C18(2)
Sonoma C18(2)	250	4,6	5	155221-SMA-C18(2)
Sonoma C18(2)	300	3,9	10	16e321-SMA-C18(2)
Sonoma C18(2)	300	4	10	164321-SMA-C18(2)
Sonoma C18(2)	300	4	15	164B21-SMA-C18(2)
Sonoma C18(2)	300	4,6	15	165B21-SMA-C18(2)
Sonoma C18(2) Prep	150	20	5	138221-SMA-C18(2)
Sonoma C18(2) Prep	250	10	10	157321-SMA-C18(2)
Sonoma C18(2) Prep	250	10	5	157221-SMA-C18(2)
Sonoma C18(2) Prep	250	20	5	158221-SMA-C18(2)
Sonoma C18(2) Analytical Guard Cartridges (Pkg. 5)	10	2	5	500103-SMA-C18(2)
Sonoma C18(2) Analytical Guard Cartridges (Pkg. 5)	10	3	5	500101-SMA-C18(2)
Analytical Guard Cartridge Holder with Integrated Coupler	–	–	–	ES500100

Other column dimensions, particle sizes,
and guard cartridges are available.
Please enquire for more details at
LCA.TechSupport@perkinelmer.com