

Technical Data Sheet

AlphaLISA® SureFire® Ultra™ p-Raf-1 (Ser338) Assay Kit

ALSU-PRAF-A500, ALSU-PRAF-A10K, ALSU-PRAF-A50K, ALSU-PRAF-A-HV

Kit-Specificity

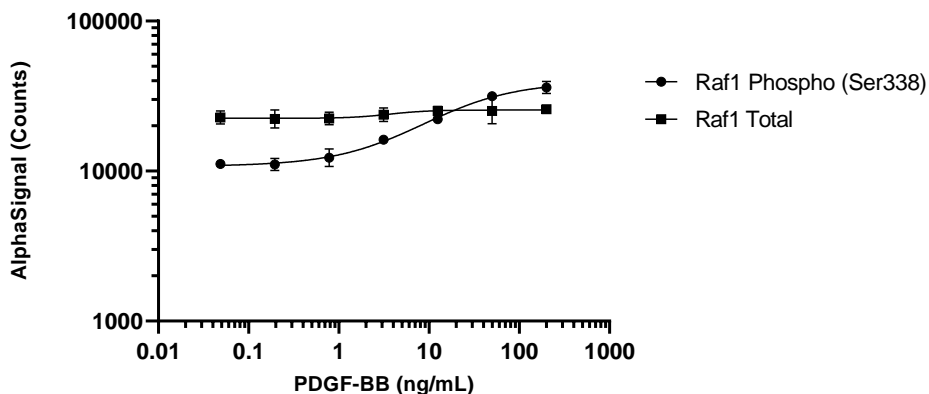
This assay kit contains antibodies which recognize the phospho Ser338 and a distal epitope on Raf-1. The protein detected by this kit corresponds to UniProt ID P04049. Raf-1 is also known as RAF proto-oncogene serine/threonine-protein kinase. These antibodies recognize Raf-1 of human, rat and mouse origin. Other species should be tested on a case-by-case basis.

Control Lysate Information

Positive Control Lysate: Prepared from HeLa cells, cultured to 90% confluence in T175 flasks in 10% FBS containing medium, then stimulated with 200 ng/mL PMA for 10 minutes and lysed in 4 mL of 1X *SureFire Ultra* Lysis Buffer.

Representative Data

Data obtained with a 2-plate, 2-incubation protocol. NIH/3T3 cells were plated at 40K cells per well in a 96 well plate and incubated overnight. Cells were then treated with PDGF-BB at the indicated concentrations for 10 minutes. Cells were lysed with 1x *SureFire Ultra* Lysis Buffer and samples were assayed separately for Total or Phospho (Ser338) Raf-1 with respective *SureFire Ultra* kits. Equivalent to approximately 4000 cells/datapoint.



For more information and detailed protocols, please refer to the generic AlphaLISA *SureFire Ultra* Assay Kits Manual, available from <http://www.perkinelmer.com/category/alpha-surefire-kits>