

Technical Data Sheet

Caution: Research use only.

AlphaLISA® SureFire® Ultra™ SMAD1 Total Assay Kit

**Products: ALSU-TSM1-A500, ALSU-TSM1-A10K, ALSU-TSM1-A50K,
ALSU-TSM1-A-HV**

Kit-Specificity Information

This assay kit contains antibodies which recognize two invariant epitopes on SMAD family member 1 (SMAD1). The protein detected by this kit corresponds to GenBank Accession NP_001003688. SMAD1 is also known as BSP1, JV41, JV4-1, MADH1 and MADR1. These antibodies recognize SMAD1 of human and mouse origin. Other species should be tested on a case-by-case basis.

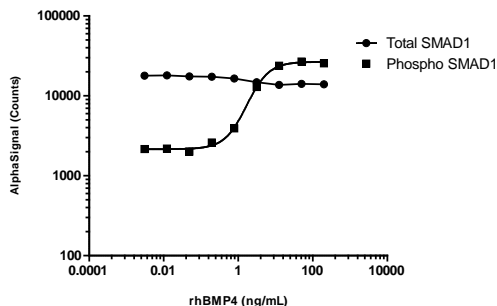
Control Lysate Information

Positive Control Lysate: Prepared from C2C12 cells, cultured to confluence in T175 flasks in 10% FBS containing medium, then treated with 50ng/mL rhBMP4 for 30min and lysed in 12mL of 1X *SureFire Ultra* Lysis buffer.

Representative data

Data obtained with a 2-plate, 2-incubation protocol. C2C12 cells were seeded at 2×10^4 cells per well in a 96 well plate and incubated overnight. Cells were then treated for 30 mins with rhBMP4 at the indicated concentrations. Cells were lysed with 1X Lysis buffer and assayed for total or phospho SMAD1 (Ser463/465) using respective SureFire Ultra assay kits.

rhBMP4 Dose Response - C2C12 cells



For more information and detailed protocols, please refer to the generic AlphaLISA *SureFire Ultra* Assay Kits Manual, available from <http://www.perkinelmer.com/category/alpha-surefire-kits>