

# Technical Data Sheet

Caution: Research use only.

## AlphaLISA® SureFire® Ultra™ SMAD3 Total Assay Kit

**Products: ALSU-TSM3-A500, ALSU-TSM3-A10K, ALSU-TSM3-A50K,  
ALSU-TSM3-A-HV**

### **Kit-Specificity Information**

This assay kit contains antibodies which recognize two invariant epitopes on SMAD3. The protein detected by this kit corresponds to GenBank Accession NP\_001138574. Based on sequence identity, cross reaction to SMAD2 is predicted to be likely. SMAD3 is also known as MADH3, JV15-2, HSPC193, HsT17436, MGC60396, DKFZp586N0721 and DKFZp686J10186. These antibodies recognize SMAD3 of human, rat and mouse origin. Other species should be tested on a case-by-case basis.

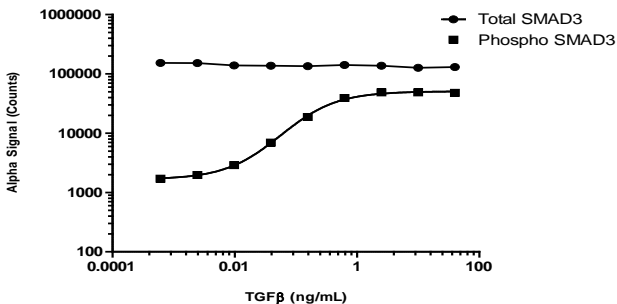
### **Control Lysate Information**

Positive Control Lysate: Prepared from RAW 264.7 cells, cultured to confluence in T175 flasks in 10% FBS containing medium, then treated with 10ng/mL rhTGFβ for 90min and lysed in 6mL of 1X *SureFire Ultra* Lysis buffer.

### **Representative data**

Data obtained with a 2-plate, 2-incubation protocol. RAW264.7 cells were grown in a 96 well plate to confluence over 3 days, then stimulated with TGFβ at the indicated concentrations for 90 mins. Cells were then lysed with 1X Lysis Buffer and assayed for total or phospho SMAD3 (Ser423/425) using respective *SureFire Ultra* assay kits.

**TGFβ Dose Response - SMAD3  
Raw264.7 cells**



For more information and detailed protocols, please refer to the generic AlphaLISA *SureFire Ultra* Assay Kits Manual, available from <http://www.perkinelmer.com/category/alpha-surefire-kits>