

# Technical Data Sheet

## AlphaLISA® SureFire® Ultra™ α-Synuclein Aggregate-Specific Assay Kit

ALSU-AASYN-A500, ALSU-AASYN-A10K, ALSU-AASYN-A50K, ALSU-AASYN-A-HV

### Kit-Specificity

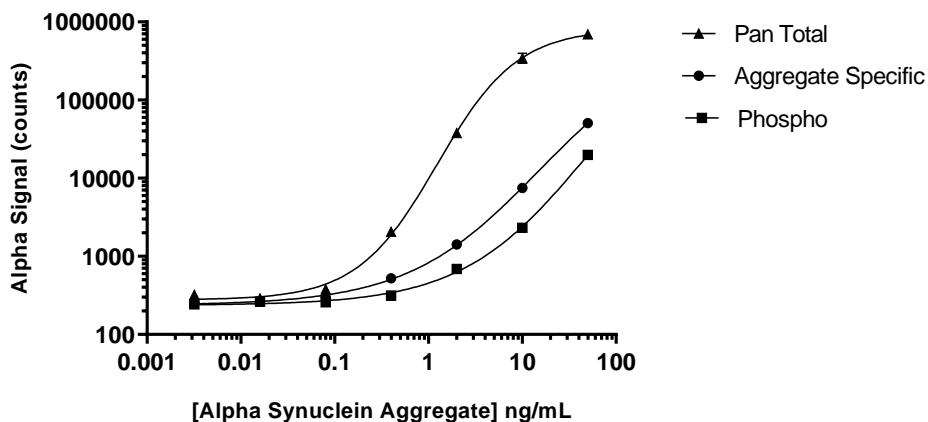
This assay kit contains antibodies which recognize distinct epitopes specific to the aggregated form of α-Synuclein. The protein detected by this kit corresponds to UniProt ID P37840. These antibodies recognize α-Synuclein of human, mouse and rat origin. Other species should be tested on a case-by-case basis.

### Positive Control Information

Positive Control: Prepared from recombinant human Alpha-synuclein protein aggregate (Active) at a concentration of 1 µg/ml (Abcam cat no. ab218819).

### Representative Data

Data obtained with a 2-plate, 2-incubation protocol. Recombinant α-Synuclein aggregate was diluted to the concentrations shown with 1X Lysis Buffer, and assayed for α-Synuclein Total, α-Synuclein Aggregate-Specific and p-α-Synuclein (Ser129) using respective SureFire Ultra kits.



For more information and detailed protocols, please refer to the generic AlphaLISA SureFire Ultra Assay Kits Manual, available from <http://www.perkinelmer.com/category/alpha-surefire-kits>.