

# Technical Data Sheet

## AlphaLISA® SureFire® Ultra™ p-4E-BP1 (Thr37/46) Assay Kit

**ALSU-P4EBP-A500, ALSU-P4EBP-A10K, ALSU-P4EBP-A50K, ALSU-P4EBP-A-HV**

### **Kit Specificity**

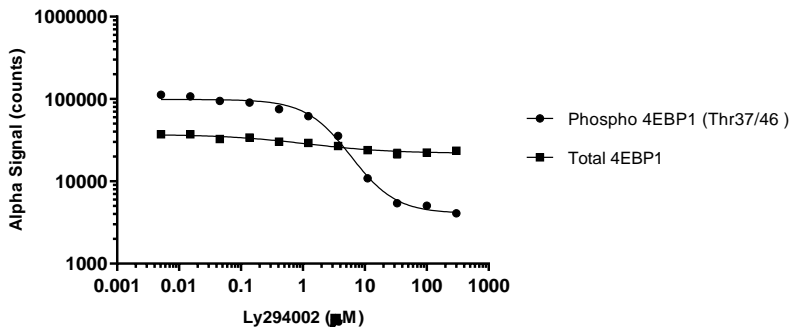
This assay kit contains antibodies which recognize the phospho-Thr37/46 epitope, and a distal epitope, on 4E-BP1. The protein detected by this kit corresponds to UniProt ID Q13541. 4E-BP1 is also known as BP-1, 4EBP1; PHAS-I, MGC4316 and EIF4EBP1. These antibodies recognize 4E-BP1 of human, mouse and rat origin. Other species should be tested on a case-by-case basis.

### **Control Lysate Information**

Positive Control Lysate: Prepared from MCF7 cells, cultured to confluence in T175 flasks in 10% FBS containing medium, then treated with 500 µg/mL insulin for 30 minutes and lysed in 20 mL of 1X *SureFire Ultra* Lysis Buffer

### **Representative Data**

Data obtained with a 2-plate, 2-incubation protocol. MCF7 cells were plated overnight at 10K cells per well in a 96 well plate, then inhibited with the indicated concentrations of Ly294002 for 2 h. Cells were lysed with 1X Lysis Buffer and diluted further prior to assaying separately for Total or Phospho (Thr37/46) 4E-BP1, using respective *SureFire Ultra* kits. Equivalent to approximately 200 cells/datapoint



For more information and detailed protocols, please refer to the generic AlphaLISA *SureFire Ultra* Assay Kits Manual, available from <http://www.perkinelmer.com/category/alpha-surefire-kits>