

# Technical Data Sheet

## AlphaLISA® SureFire® Ultra™ p-ACC (Ser79) Assay Kit

ALSU-PACC-A500, ALSU-PACC-A10K, ALSU-PACC-A50K, ALSU-PACC-A-HV

### Kit-Specificity

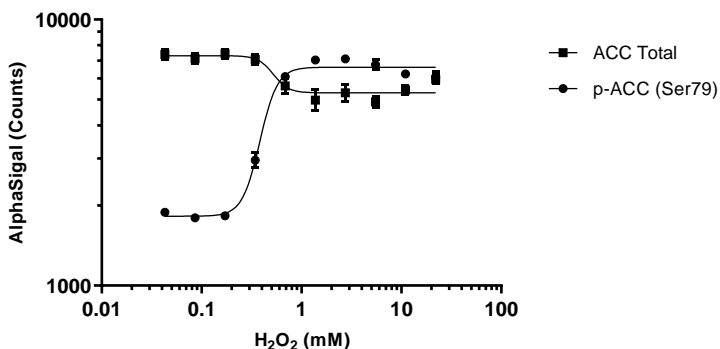
This assay kit contains antibodies which recognize the phospho-Ser79 epitope, and a distal epitope, on ACC. The protein detected by this kit corresponds to UniProt ID Q13085. ACC is also known as Acetyl-coA carboxylase 1 (alpha). These antibodies recognize ACC of human origin and is predicted to also recognize mouse and rat. Other species should be tested on a case-by-case basis.

### Control Lysate Information

Positive Control Lysate: Prepared from HEK293 cells, cultured to confluence in T175 flasks in 10% FBS containing medium, then treated with 11 mM H<sub>2</sub>O<sub>2</sub> for 10 minutes and lysed in 5 mL 1X *SureFire Ultra* Lysis Buffer.

### Representative Data

Data obtained with a 2-plate, 2-incubation protocol. HEK293 cells were plated in at 40K cells per well in a 96 well plate and incubated overnight. Cells were treated with H<sub>2</sub>O<sub>2</sub> at the indicated concentrations for 10 minutes. Cells were lysed with 1X Lysis Buffer and diluted further prior to assaying for Total or Phospho (Ser79) ACC, using respective *SureFire Ultra* assay kits. Equivalent to approximately 200 cells/datapoint.



For more information and detailed protocols, please refer to the generic AlphaLISA *SureFire Ultra* Assay Kits Manual, available from <http://www.perkinelmer.com/category/alpha-surefire-kits>.