

Technical Data Sheet

AlphaLISA® SureFire® Ultra™ p-Akt 1/2/3 (Ser473) Assay Kit

ALSU-PAKT-B500, ALSU-PAKT-B10K, ALSU-PAKT-B50K, ALSU-PAKT-B-HV

Kit-Specificity

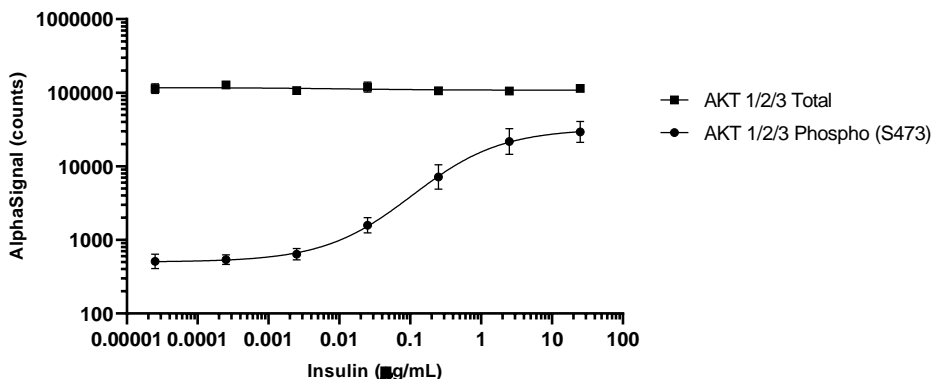
This assay kit contains antibodies which recognize the phospho-Ser473 epitope, and a distal epitope, common to AKT 1, AKT 2 and AKT 3. The proteins detected by this kit corresponds to UniProt ID P31749. AKT proteins are also known as PKB or RAC. These antibodies recognize AKT 1/2/3 of human, mouse and rat origin. Other species should be tested on a case-by-case basis

Control Lysate Information

Positive Control Lysate: Prepared from HEK293 cells, cultured to confluence in T175 flasks in 10% FBS containing medium, then treated with 20% FBS for 15 minutes and lysed in 4 mL of 1X *SureFire Ultra* Lysis Buffer.

Representative Data

Data obtained with a 2-plate, 2-incubation protocol. MCF7 cells were plated at 40K cells per well in a 96 well plate and incubated overnight. Cells were serum starved for 2 hours prior to treatment with insulin at the indicated concentrations for 30 minutes. Cells were lysed with 1x Lysis Buffer and assayed separately for Total or Phospho (Ser473) AKT 1/2/3 using respective *SureFire Ultra* kits. Equivalent to approximately 4000 cells/datapoint.



For more information and detailed protocols, please refer to the generic AlphaLISA *SureFire Ultra* Assay Kits Manual, available from <http://www.perkinelmer.com/category/alpha-surefire-kits>