

Technical Data Sheet

Caution: Research use only.

AlphaLISA® SureFire® Ultra™ p-SHP-2 (Tyr542) Assay Kit

**Products: ALSU-PSHP2-A500, ALSU-PSHP2-A10K, ALSU-PSHP2-A50K,
ALSU-PSHP2-A-HV**

Kit-Specificity Information

This assay kit contains antibodies that specifically recognize the phospho-Tyr542 epitope, or an invariant epitope on SHP-2. The human protein detected by this kit corresponds to Entrez Gene ID 5781 (human).

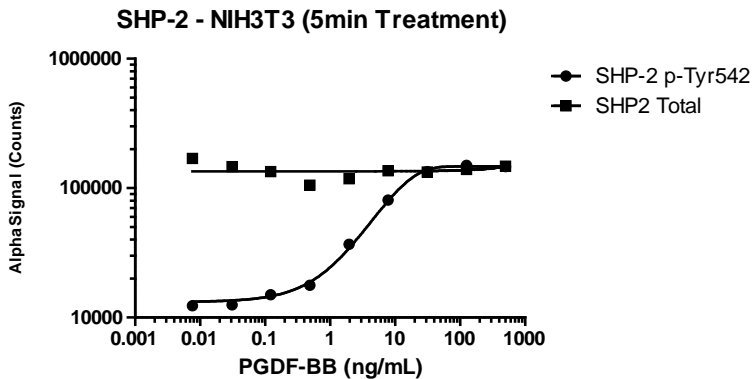
These antibodies recognize SHP-2 of human and mouse origin. Other species should be tested on a case-by-case basis.

Control Lysate Information

Positive Control Lysate: Prepared from HeLa cells cultured to confluence in T175 flasks in 10%FBS containing medium, then treated with 5mM Pervanadate for 45 mins, and lysed with 10mL of 1X *SureFire Ultra* Lysis buffer.

Representative data

Data obtained with a 2-plate, 2-incubation protocol. NIH3T3 cells (200µl/well) were seeded at 100K cells/mL in a 96 well plate, incubated overnight, and then stimulated for 5min with PDGF, then lysed with 100µL Lysis Buffer. Data shows phosphorylation of SHP-2 Tyr542 and Total SHP-2 (measured with respective kits).



For more information and detailed protocols, please refer to the generic AlphaLISA *SureFire Ultra* Assay Kits Manual, available from <http://www.perkinelmer.com/category/alpha-surefire-kits>