

Technical Data Sheet

AlphaLISA® SureFire® Ultra™ ACC Total Assay Kit

ALSU-TACC-A500, ALSU-TACC-A10K, ALSU-TACC-A50K, ALSU-TACC-A-HV

Kit-Specificity

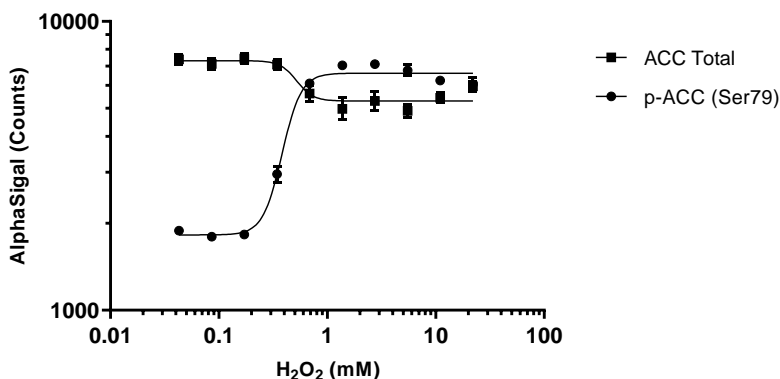
This assay kit contains antibodies that recognize invariant epitopes on ACC. The protein detected by this kit corresponds to UniProt ID Q13085. ACC is also known as Acetyl-coA carboxylase 1 (alpha). These antibodies recognize ACC of human origin and is predicted to also recognize mouse and rat. Other species should be tested on a case-by-case basis

Control Lysate Information

Positive Control Lysate: Prepared from HEK293 cells, cultured to confluence in T175 flasks in 10% FBS containing medium, then treated with 11 mM H₂O₂ for 10 minutes and lysed in 5 ml 1X *SureFire Ultra* Lysis Buffer.

Representative Data

Data obtained with a 2-plate, 2-incubation protocol. HEK293 cells were plated in at 40K cells per well in a 96 well plate and incubated overnight. Cells were treated with H₂O₂ at the indicated concentrations for 10 minutes. Cells were lysed with 1X Lysis Buffer and diluted further prior to assaying for Total or Phospho (Ser79) ACC, using respective *SureFire Ultra* assay kits. Equivalent to approximately 200 cells/datapoint.



For more information and detailed protocols, please refer to the generic AlphaLISA *SureFire Ultra* Assay Kits Manual, available from <http://www.perkinelmer.com/category/alpha-surefire-kits>.