

Technical Data Sheet

AlphaLISA® SureFire® Ultra™ PLCγ2 Total Assay Kit

ALSU-TPLCG2-A500, ALSU-TPLCG2-A10K, ALSU-TPLCG2-A50K, ALSU-TPLCG2-A-HV

Kit Specificity

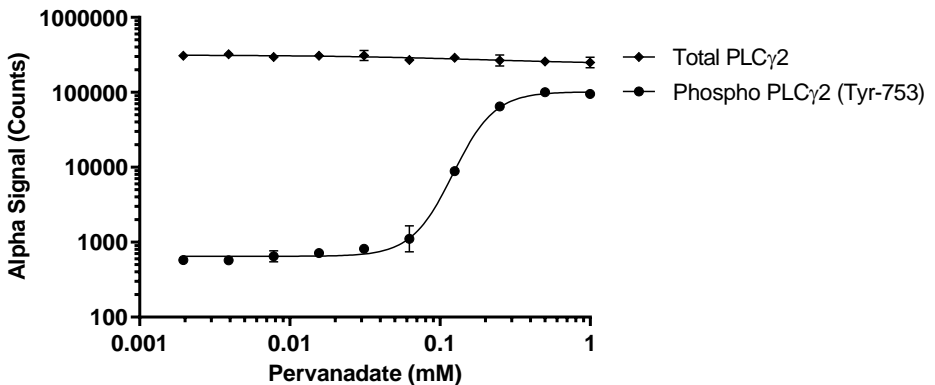
This assay kit contains antibodies which recognize invariant epitopes on PLCγ2. The protein detected by this kit corresponds to UniProt ID P16885. These antibodies recognize PLCγ2 of human origin. Other species should be tested on a case-by-case basis.

Control Lysate Information

Positive Control Lysate: Prepared from THP1 cells cultured in T175 flasks to between $0.6-0.8 \times 10^6$ cells/mL in 10% FBS containing medium. Cells were washed, then treated with 0.25 mM Pervanadate in HBSS for 30 minutes and lysed to 4×10^6 cells/mL with 5X *SureFire Ultra* Lysis buffer.

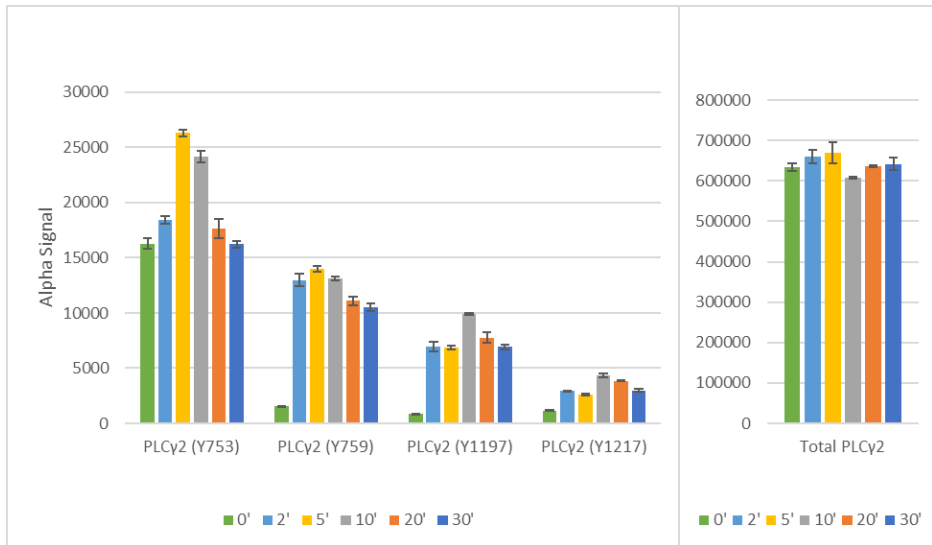
Representative Data

Data obtained with a 2-plate, 2-incubation protocol. THP1 cells were plated at 80K cells/well in a 96 well plate in HBSS + 0.1% BSA, then treated with Pervanadate at the indicated concentrations for 30 minutes at 37°C. Cells were then lysed with 5X *SureFire Ultra* Lysis buffer, and assayed for Phospho (Tyr753) or Total PLCγ2 in separate wells of an assay plate with respective *SureFire Ultra* kits. Equivalent to approximately 3,200 cells/datapoint.



Technical Data Sheet

Data obtained with a 2-plate, 2-incubation protocol. Ramos cells were harvested and prepared at 3×10^6 cells/mL in a 96 well plate in HBSS + 0.1% BSA. Cells were treated with 25 $\mu\text{g}/\text{mL}$ of Anti IgM antibody for 0, 2, 5, 10, 20 and 30 mins. Cells were then lysed with 5X *SureFire Ultra* Lysis buffer and assayed for Phospho (Y753, Y759, Y1197, Y1217) and Total PLC γ 2 in separate wells of an assay plate with respective *SureFire Ultra* kits. Equivalent to approximately 24,000 cells/datapoint.



For more information and detailed protocols, please refer to the generic AlphaLISA *SureFire Ultra* Assay Kits Manual, available from <http://www.perkinelmer.com/category/alpha-surefire-kits>.