

Technical Data Sheet

AlphaLISA® SureFire® Ultra™ p-PLC γ 2 (Tyr1197) Assay Kit

ALSU-PPLCG2-C500, ALSU-PPLCG2-C10K, ALSU-PPLCG2-C50K, ALSU-PPLCG2-C-HV

Kit Specificity

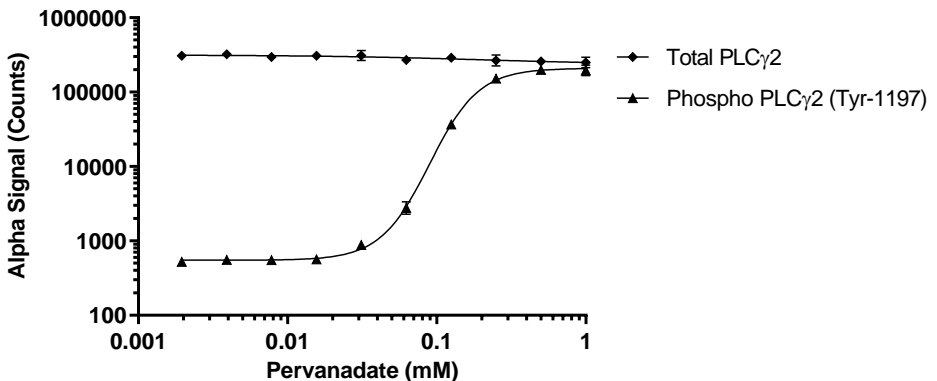
This assay kit contains antibodies which recognize phospho Tyr-1197 and a distal epitope on PLC γ 2. The protein detected by this kit corresponds to UniProt ID P16885. These antibodies recognize PLC γ 2 of human origin. Other species should be tested on a case-by-case basis.

Control Lysate Information

Positive Control Lysate: Prepared from THP1 cells cultured in T175 flasks to between 0.6-0.8 x 10⁶ cells/mL in 10% FBS containing medium. Cells were washed, then treated with 0.25 mM Pervanadate in HBSS for 30 minutes and lysed to 4 x 10⁶ cells/mL with 5X *SureFire Ultra* Lysis buffer.

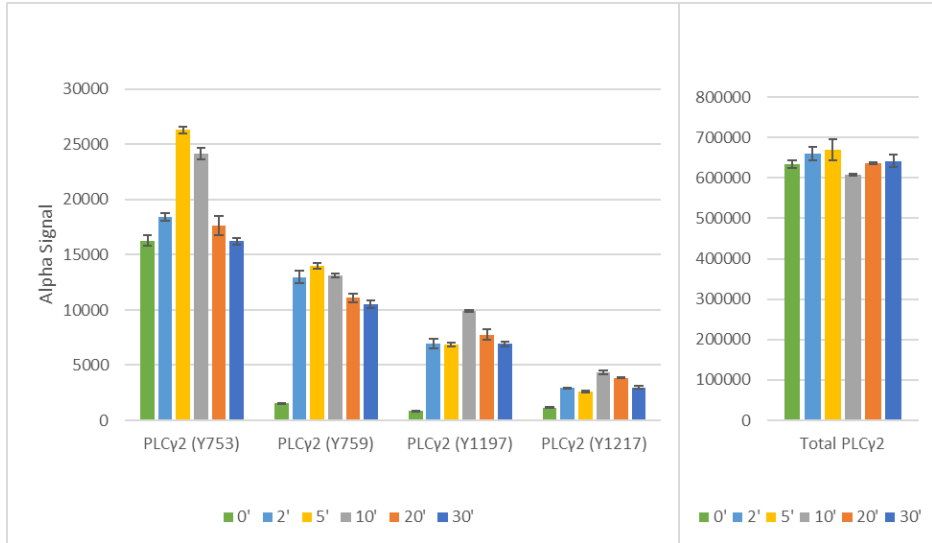
Representative Data

Data obtained with a 2-plate, 2-incubation protocol. THP1 cells were plated at 80K cells/well in a 96 well plate in HBSS + 0.1% BSA, then treated with Pervanadate at the indicated concentrations for 30 minutes at 37°C. Cells were then lysed with 5X *SureFire Ultra* Lysis buffer, and assayed for Phospho (Tyr1197) or Total PLC γ 2 in separate wells of an assay plate with respective *SureFire Ultra* kits. Equivalent to approximately 3,200 cells/datapoint.



Technical Data Sheet

Data obtained with a 2-plate, 2-incubation protocol. Ramos cells were harvested and prepared at 3×10^6 cells/mL in a 96 well plate in HBSS + 0.1% BSA. Cells were treated with 25 $\mu\text{g/mL}$ of Anti IgM antibody for 0, 2, 5, 10, 20 and 30 mins. Cells were then lysed with 5X *SureFire Ultra* Lysis buffer and assayed for Phospho (Y753, Y759, Y1197, Y1217) and Total PLC γ 2 in separate wells of an assay plate with respective *SureFire Ultra* kits. Equivalent to approximately 24,000 cells/datapoint.



For more information and detailed protocols, please refer to the generic AlphaLISA *SureFire Ultra* Assay Kits Manual, available from <http://www.perkinelmer.com/category/alpha-surefire-kits>.