

# Technical Data Sheet

## AlphaLISA® SureFire® Ultra™ p-Rb (Ser780) Assay Kit

ALSU-PRB-C500, ALSU-PRB-C10K, ALSU-PRB-C50K, ALSU-PRB-C-HV

### Kit-Specificity

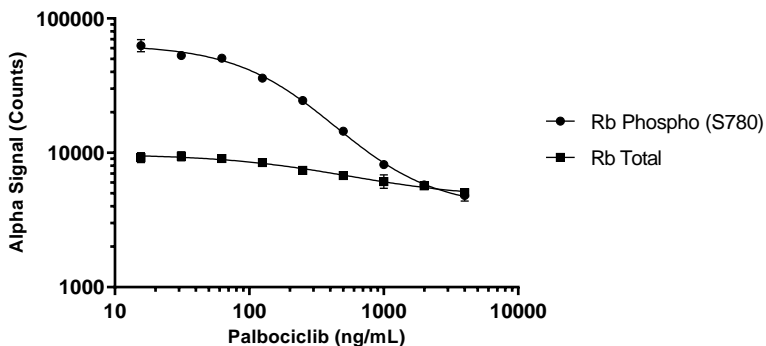
This assay kit contains antibodies which recognize the phospho-Ser780 epitope and a distal epitope on retinoblastoma tumor suppressor protein (Rb). The protein detected by this kit corresponds to UniProt ID P06400. Rb is also known as p105-Rb and p110-RB1. These antibodies recognize Rb of human and mouse origin. Other species should be tested on a case-by-case basis.

### Control Lysate Information

Positive Control Lysate: Prepared from Jurkat cells cultured in T175 flasks to approximately  $1 \times 10^6$  cells/mL in 10% FBS containing medium, then treated with 1.25 mM Pervanadate for 30 minutes and lysed at  $3.2 \times 10^6$  cells/mL with 1X *SureFire Ultra* Lysis Buffer.

### Representative Data

Data obtained with a 2-plate, 2-incubation protocol. Caco2 cells were seeded at 40K cells per well in a 96 well plate and incubated overnight. Cells were then treated with Palbociclib at the indicated concentrations for 24 hours. Cells were lysed in 1x Lysis Buffer and assay for Total or Phospho (Ser780) Rb using respective *SureFire Ultra* kits. Equivalent to approximately 4000 cells/datapoint.



For more information and detailed protocols, please refer to the generic AlphaLISA *SureFire Ultra* Assay Kits Manual, available from <http://www.perkinelmer.com/category/alpha-surefire-kits>