

LABStartUp

A Guide Before You Begin

Build Laboratory Success:

Ask the *Right* Questions Before You Begin



Building a new or relocated lab without infrastructure can be a daunting task. Not only understanding which boxes to check, but which lists to write can be overwhelming. Lab funding isn't endless, and a bad financial decision could stall your research and career progress.

Asking the right questions early on is one of the crucial steps to building a successful lab. We've compiled a list questions for you to get started on building your lab, whether you're starting from ground zero or moving to a new space.

Infrastructure

Setting up your lab the right way, the first time, is crucial to streamlined functioning and future expansion. This process includes thinking about how transportation around the lab will work and if researchers have easy access to utility systems. Factors such as HVAC need to be accounted for, including building in space for possible future maintenance. Flexibility and adaptability are two considerations and building them into your lab early on can save you time and money down the line.

Here are some key questions to ask about infrastructure:



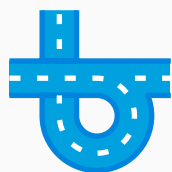
Are you able to easily rotate or move machines around?



Are all the safety considerations accounted for?



Are the non-wet-lab workspaces in safe, ergonomically sound environments?



Is the lab workflow designed for ideal specimen movement?

Equipment

Without the right equipment, a lab couldn't produce results. But more than just purchasing what you need right now, researchers need to think about years down the line to build in extra functionalities if they expand the scope of their research. More than that, equipment requires care and monitoring so building in support for those aspects is essential to keeping a smooth and steady lab workflow.

Here are some key questions to ask about equipment:



What instruments will benefit your lab (now and in the future)?



Are you keeping up with instrument maintenance?



Is your lab well stocked and do you have protocols in place to maintain the stock?



Are you unlocking everything that your instrument has to offer?

Protocols

All labs have standard protocols but starting a lab without a system to put them in place and monitor them can get you off to a rough start. If a protocol has too many edits or additions, it can become confusing and errors could happen. Make sure you can maintain proper procedures and have a system for any changes you need to make down the line.

Here are some key questions to ask about protocols:



Is your lab operating as efficiently as possible (both online and offline)?



Is your data management system secure and easy to manage?



Are your scientists working safely?



Do you have a proper budget in place?



Does everyone have access to the procedures?

People

The scientists are what make a lab run and providing yours with the best resources and support can go a long way in helping your lab succeed.



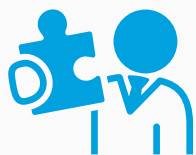
Here are some key questions to ask about people:



Do you have continuing education and training initiatives in place to support your staff?



Are you promoting a healthy work culture?



Does your staff have what they need to succeed, and do they feel supported?

Next Steps

These are some essential questions to get you thinking about the intricacies of setting up a new lab or moving lab spaces. Experts, like vendors, can help you optimize your lab space for your research needs and ask questions you haven't thought of yet.

PerkinElmer's new lab start-up program provides personalized, concierge help in making sure all your boxes are checked so that program participants can get back to the science.

LABStartUp
Program

Click here for more information
about the program and its benefit.

PerkinElmer, Inc.
940 Winter Street
Waltham, MA 02451 USA
P: (800) 762-4000 or
(+1) 203-925-4602
www.perkinelmer.com



For a complete listing of our global offices, visit www.perkinelmer.com/ContactUs

Copyright ©2021, PerkinElmer, Inc. All rights reserved. PerkinElmer® is a registered trademark of PerkinElmer, Inc. All other trademarks are the property of their respective owners.