



FLUORESCENT PANELS

Introducing Fluorescent Panels Targeted For Your Research

Choosing the fluorescent probes you need for your research has never been easier. PerkinElmer offers a comprehensive suite of ready-to-use *in vivo* fluorescent probes to help you get the most out of your imaging studies. Our new fluorescent panels bundle pre-validated, well-known and well-published imaging probes such as IVISense™ Pan Cathepsin (ProSense®), MMP (MMPSense®), and Vascular (AngioSense®) agents to enhance your molecular imaging data to gain a better understanding of disease and its progression.

Use Fluorescent Panels to help you:

- Save time in researching and selecting the best fluorescent probes for your research study
- Gather more complete molecular imaging data for specific disease areas
- Rapidly Monitor, evaluate and characterize disease pathways

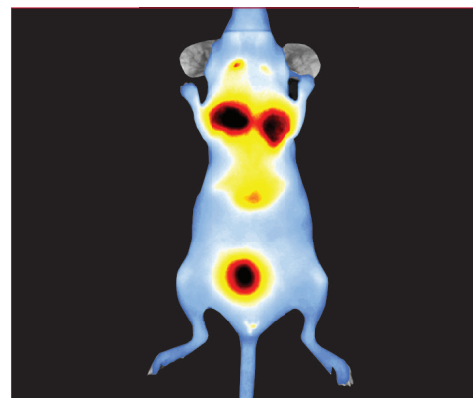


Figure 1. IVISbrite 4T1 bioluminescent tumor cells (mouse breast adenocarcinoma) using IVISense MMP 680 fluorescent probe in a nu/nu mouse model.

IVISense™ Fluorescent Panel	Used To	IVISense™ Fluorescent Panel Contents		
Arthritis Panel	Detect molecular players in arthritis pathology	Vascular 750 CAT B 750 FAST	CAT K 680 FAST MMP 680	Osteo 680 Pan Cathepsin
Tumor Metabolism Panel	Non-invasively measure tumor microenvironment biology for early detection of treatment-induced biological changes	Vascular 680 Annexin-V 750 Bombesin Receptor 680	Folate Receptor 680 MMP 750 FAST	Pan Cathepsin 680 Transferrin Receptor 750
Toxicology Panel	Detect molecular players and measure early changes in drug-induced injury	Vascular 680 Annexin-V 750	MMP 750 FAST Renin 680 FAST	Transferrin Receptor 750
Oncology Panel	Non-invasively characterize the tumor environment to assess biological changes associated with disease progression or treatment efficacy	Vascular 680 Folate Receptor 680	Integrin Receptor 750 MMP 750 FAST	Pan Cathepsin 750
Inflammation Panel	Quantify inflammation biology, particularly in longitudinal studies for understanding disease pathogenesis	Vascular 680 Folate Receptor 680	Integrin Receptor 750 MMP 750 FAST	Neutrophil Elastase 680 FAST Pan Cathepsin 750 FAST
Vascular Panel	Characterize biological changes associated with vascular injury and disease	Vascular 680 CAT B 680 FAST	Integrin Receptor 680 MMP 750 FAST	Pan Cathepsin 750 FAST
Featured Probes Pack	Approach different research areas by sampling our most popular and published fluorescent probes	Vascular 680 Folate Receptor 680	Integrin Receptor 750 MMP 750 FAST	Pan Cathepsin 680 680 NHS Labeling Kit
Sample Pack	Combine fluorescence and bioluminescent imaging by sampling our most popular and published fluorescent probes, as well as ready-to-use injectable luciferin for bioluminescent imaging	Vascular 680 Integrin Receptor 750	MMP 750 FAST Pan Cathepsin 750	IVISbrite™ D-Luciferin Bioluminescent Substrate - RediJect™ Solution

*Two vials of IVISense MMP are provided for the Annexin/MMP/Transferrin cocktail as detailed in the Fluorescent Panel User Guide.

Component Function	IVISense Imaging Probe	Fluorescent Panel							
		Arthritis (NEV20003)	Tumor Metabolism (NEV20015)	Toxicology (NEV20016)	Oncology (NEV20005)	Inflammation (NEV20013)	Vascular (NEV20014)	Featured Probes (NEV20011)	Sample Pack (NEV20000)
Vascular probe: leaks into sites of edema	Vascular 680		X	X	X	X	X	X	X
	Vascular 750	X							
Pan-cathepsin activatable probe: lysosomal marker of inflammatory cells	Pan Cathepsin 680	X	X					X	
	Pan Cathepsin 750				X				X
	Pan Cathepsin 750 FAST					X	X		
Pan-MMP activatable probe: secreted marker of inflammatory cells, bone/cartilage degradation	MMP 680	X							
	MMP 750 FAST		X	X	X	X	X	X	X
Bone turnover targeted probe: detects areas of exposed hydroxyapatite	Osteo 680	X							
Cathepsin k activatable probe: secreted marker of osteoclasts, bone degradation	CAT K 680 FAST	X							
Cathepsin B activatable probe: lysosomal marker of inflammatory cells	CAT B 680 FAST						X		
	CAT B 750 FAST	X							
Folate receptor targeted probe: marker on inflammatory cells; metabolic marker on tumor cells	Folate Receptor 680		X		X	X		X	
Bombesin receptor targeted probe: metabolic marker on tumor cells	Bombesin Receptor 680		X						
Transferrin receptor targeted probe: metabolic marker on tumor cells	Transferrin Receptor 750		X	X					
Death/apoptosis probe: detects surface phosphatidylserine increase on dying cells	Annexin-V 750		X	X					
Renin activatable probe: marker of tissue renin-angiotensin system activity	Renin 680 FAST			X					
α VB3 integrin targeted probe: marker on activated tumors and neovasculature	Integrin Receptor 680						X		
	Integrin Receptor 750				X	X		X	X
Neutrophil elastase activatable probe: secreted protease from neutrophils	Neutrophil Elastase 680 FAST					X			
Labels small molecules, proteins, antibodies, nanoparticles, or other macromolecules	680 NHS Protein Labeling Kit							X	
Substrate that produces light upon oxidation catalyzed by firefly luciferase and ATP: monitor luciferase-expressing cells	IVISbrite D-Luciferin Rediject Solution (pre-formulated, ready-to-use injectable format)								X

Panels are not open to substitution. For ordering information on individual components, please visit <https://www.perkinelmer.com/category/in-vivo-imaging-reagents> or contact your PerkinElmer Account Manager.

PerkinElmer, Inc.
940 Winter Street
Waltham, MA 02451 USA
P: (800) 762-4000 or
(+1) 203-925-4602
www.perkinelmer.com



For a complete listing of our global offices, visit www.perkinelmer.com/ContactUs

Copyright ©2021, PerkinElmer, Inc. All rights reserved. PerkinElmer® is a registered trademark of PerkinElmer, Inc. All other trademarks are the property of their respective owners.