

# Technical Data Sheet

## AlphaLISA® SureFire® Ultra™ Human c-Myb (p-Ser11) Detection Kit

ALSU-PCMYB-A500, ALSU-PCYMB-A10K, ALSU-PCMYB-A50K, ALSU-PCMYB-A-HV

### Kit Specificity

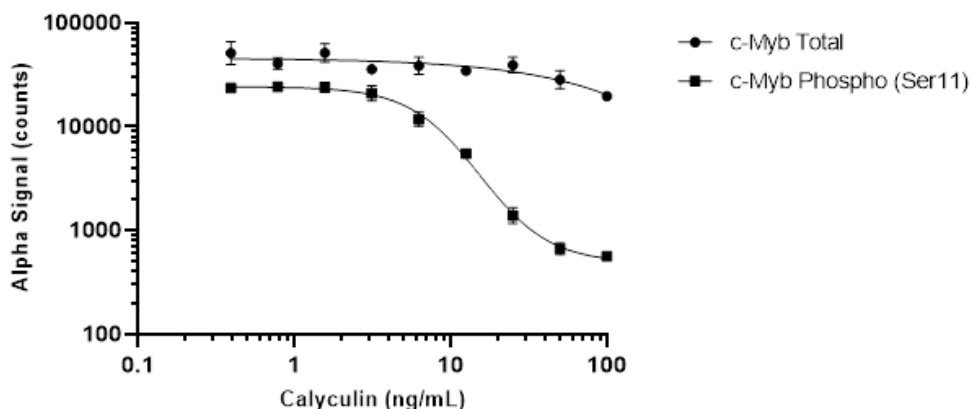
This assay kit contains antibodies which recognize the phospho Ser-11 epitope and a distal epitope on c-Myb. The protein detected by this kit corresponds to UniProt ID P10242. c-Myb is also known as Transcriptional activator Myb. These antibodies recognize c-Myb of human origin. Other species should be tested on a case-by-case basis.

### Control Lysate Information

Positive Control Lysate: Prepared from Molt-4 cells seeded at  $0.4 \times 10^6$  cells/mL the day prior to use in medium containing 10% FCS. Cells were washed in HBSS and lysed at  $2 \times 10^6$  cells/mL in 1X *SureFire Ultra* Lysis Buffer.

### Representative Data

Data obtained with a 2-plate, 2-incubation protocol. U937 cells were seeded in fresh medium containing 10% FCS at  $0.4 \times 10^6$  cells/mL for 24 hours. Cells were washed and resuspended in HBSS + 10% FCS at  $2 \times 10^6$  cells/mL and treated with Calyculin at the indicated concentrations in the presence of 10  $\mu$ M MG132 for 2 hours. Cells were lysed with *SureFire Ultra* Lysis Buffer and assayed for Total and Phospho (Ser-11) c-Myb using respective *SureFire Ultra* detection kits. Equivalent to approximately 8000 cells/datapoint.



For more information and detailed protocols, please refer to the generic AlphaLISA *SureFire Ultra* Detection Kits Manual, available from <http://www.perkinelmer.com>