

# Technical Data Sheet

## AlphaLISA® SureFire® Ultra™ p-PKR (Thr451) Assay Kit

ALSU-PPKR-B500, ALSU-PPKR-B10K, ALSU-PPKR-B50K, ALSU-PPKR-B-HV

### Kit Specificity

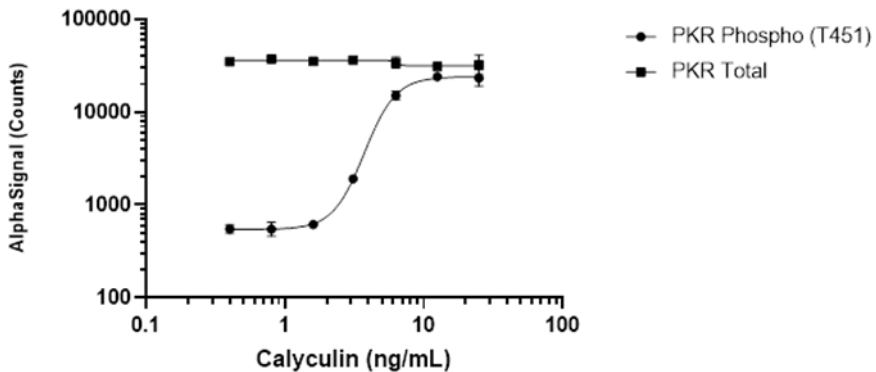
This assay kit contains antibodies which recognize the phospho Thr-451 epitope and a distal epitope on PKR. The protein detected by this kit corresponds to UniProt ID P19525. PKR is also known as Interferon induced, double stranded-RNA activated protein kinase and eIF-2A protein kinase 2. These antibodies recognize PKR of human origin, other species should be tested on a case-by-case basis.

### Control Lysate Information

Positive Control Lysate: Prepared from AN3CA cells, cultured to confluence in T175 flasks in 10% FBS containing medium, then treated with 20 ng/mL Calyculin for 4 hours and lysed in 5 mL of 1X *SureFire Ultra* Lysis Buffer.

### Representative Data

Data obtained with a 2-plate, 2-incubation protocol. AN3CA cells were plated at 40K cells per well in a 96 well plate and incubated overnight. Cells were then treated with Calyculin at the indicated concentrations for 3 hours. Cells were lysed with 1X *SureFire Ultra* Lysis Buffer and assayed separately for Total or Phospho (Thr451) PKR, using respective *SureFire Ultra* assay kits. Equivalent to approximately 4000 cells/datapoint.



For more information and detailed protocols, please refer to the generic AlphaLISA *SureFire Ultra* Assay Kits Manual, available from <http://www.perkinelmer.com/category/alpha-surefire-kits>