

Technical Data Sheet

AlphaLISA® SureFire® Ultra™ RIP3 Total (Human) Assay Kit

ALSU-TRIP3-A500, ALSU-TRIP3-A10K, ALSU-TRIP3-A50K, ALSU-TRIP3-A-HV

Kit Specificity

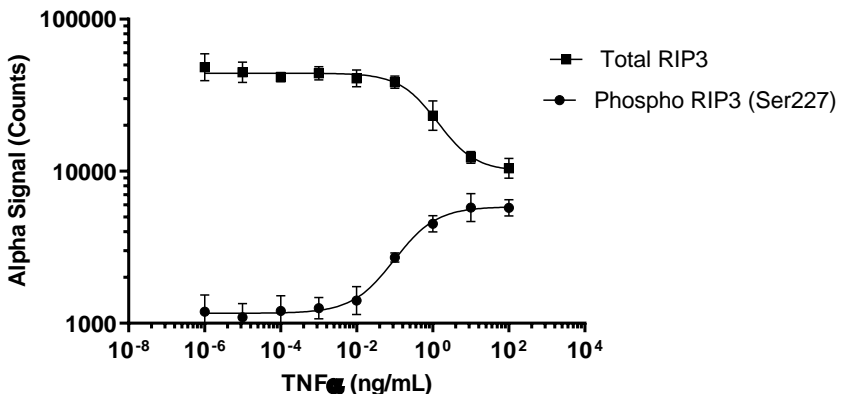
This assay kit contains antibodies which recognize invariant epitopes on RIP3. The protein detected by this kit corresponds to UniProt ID Q9Y572. RIP3 is also known as RIPK3. These antibodies recognize RIP3 of human origin. Other species should be tested on a case-by-case basis.

Control Lysate Information

Positive Control Lysate: Prepared from U937 cells, seeded at 800 K/mL and grown overnight in T175 flasks in 50 mL of 10% FBS containing medium. Cells were treated with 50 ng/mL TNF α , 20 μ M Z-VAD and 200 nM SM-164 for 7 hours at 37°C. Cells were harvested, washed with HBSS and lysed in 5 mL of 1X *SureFire Ultra* Lysis Buffer.

Representative Data

Data obtained with a 2-plate, 2-incubation protocol. U937 cells were plated at 400K cells per well in a 96 well plate in RPMI + 10% FBS, then treated with 20 μ M Z-VAD, 200 nM SM-164 and TNF α at the indicated concentrations for 7 hours at 37°C. Cells were then washed with HBSS, lysed with 1X *SureFire Ultra* Lysis Buffer, and assayed for Total or Phospho (Ser227) RIP3 in separate wells of an assay plate with respective *SureFire Ultra* kits. Equivalent to approximately 20,000 cells/datapoint.



For more information and detailed protocols, please refer to the generic AlphaLISA *SureFire Ultra* Assay Kits Manual, available from <http://www.perkinelmer.com/category/alpha-surefire-kits>