

Technical Data Sheet

AlphaLISA® SureFire® Ultra™ Human and Mouse p-SLP-76 (Tyr145) Detection Kit

ALSU-PSLP-E500, ALSU-PSLP-E10K, ALSU-PSLP-E50K, ALSU-PSLP-E-HV

Kit Specificity

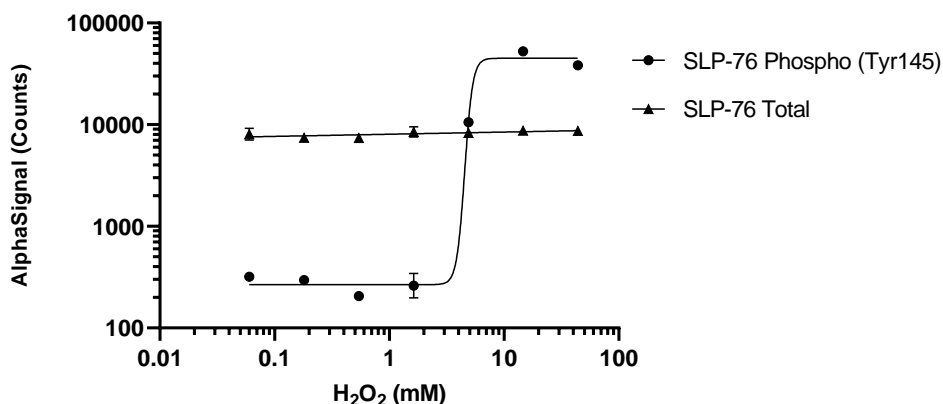
This assay kit contains antibodies which recognize the phospho-Tyr145 epitope and a distal epitope on SLP-76. The protein detected by this kit corresponds to UniProt ID Q13094. SLP-76 is also known as Lymphocyte cytosolic protein 2. These antibodies recognize SLP-76 of human and mouse origin. Other species should be tested on a case-by-case basis.

Control Lysate Information

Positive Control Lysate: Prepared from Raw264.7 cells, cultured to confluence in T175 flasks in 10% FBS containing medium. Cells were treated with 11 mM H₂O₂ and 50 nM Calyculin A for 10 minutes at 37°C. Cells were lysed in 5 mL of *SureFire Ultra* Lysis Buffer.

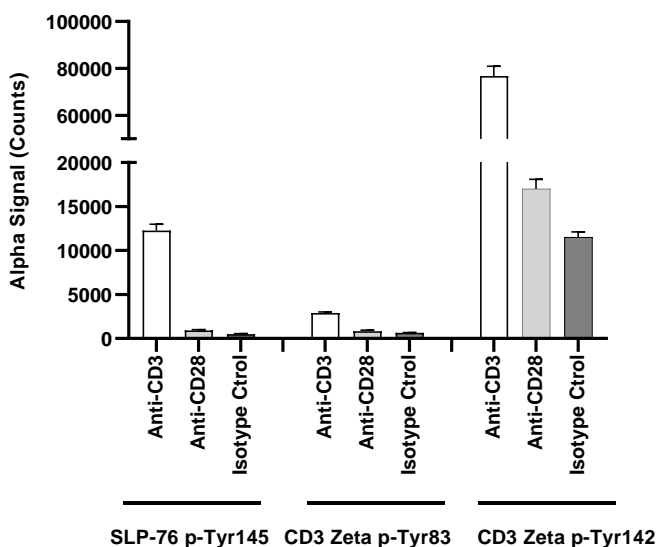
Representative Data

Data obtained with a 2-plate, 2-incubation protocol. Raw264.7 cells were seeded at 20K cells/well in a 96 well plate and incubated for two days. Cells were treated with H₂O₂ at the indicated concentrations for 10 minutes at 37°C. Cells were lysed with *SureFire Ultra* Lysis Buffer and assayed for Phospho (Tyr145) and Total SLP-76 in separate wells of an assay plate with respective *SureFire Ultra* kits. Equivalent to approximately 4,000 cells/datapoint.



Technical Data Sheet

Data obtained with a 2-plate, 2-incubation protocol. Jurkat cells were seeded at 6M cells/well in a 12 well plate in HBSS + 0.1% BSA on the day of stimulation. Cells were treated with 10 µg/mL of anti-CD3, anti-CD28 or a mouse IgG isotype control for 10 minutes at 37°C. Cells were lysed with *SureFire Ultra* Lysis Buffer and assayed for Phospho SLP-76 (Tyr145) and Phospho CD3 Zeta (Tyr83 and Tyr142) in separate wells of an assay plate with respective *SureFire Ultra* kits. Equivalent to approximately 12,000 cells/datapoint.



For more information and detailed protocols, please refer to the generic AlphaLISA *SureFire Ultra* Detection Kits Manual, available from <http://www.perkinelmer.com/category/alpha-surefire-kits>