

Technical Data Sheet

AlphaLISA® SureFire® Ultra™ p-ATG16L1 (Ser278) Assay Kit

ALSU-PATG-A500, ALSU-PATG-A10K, ALSU-PATG-A50K, ALSU-PATG-A-HV

Kit Specificity

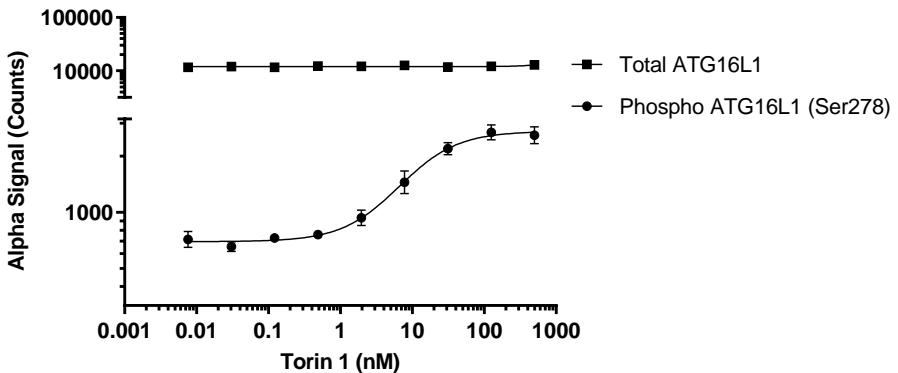
This assay kit contains antibodies which recognize the phospho-Ser278 epitope, and a distal epitope, on ATG16L1. The protein detected by this kit corresponds to UniProt ID Q676U5. ATG16L1 is also known as ATG16L, ATG16A and WDR30. These antibodies recognize ATG16L1 of human and mouse origin. Other species should be tested on a case-by-case basis.

Control Lysate Information

Positive Control Lysate: Prepared from PC3 cells, cultured to confluence in T175 flasks in 10% FBS medium. Cells were amino acid starved with DPBS (containing Ca^{2+} , Mg^{2+} and glucose) for 4 hours at 37°C. Cells were lysed in 2 mL of 1X *SureFire Ultra* Lysis Buffer.

Representative Data

Data obtained with a 2-plate, 2-incubation protocol. PC3 cells seeded at 40K cells per well in a 96 well plate and incubated overnight. Cells were treated with Torin 1 in complete media at the indicated concentrations for 2 hours at 37°C. Cells were washed with DPBS, lysed with 1X *SureFire Ultra* Lysis Buffer and assayed for Phospho (Ser278) or Total ATG16L1 in separate wells of an assay plate with respective *SureFire Ultra* kits. Equivalent to approximately 8,000 cells/datapoint. Nb: Endogenous Phospho ATG16L1 levels were low and assay signals could be improved with a 2 x 2 h assay (std 2 x 1 h data below).



For more information and detailed protocols, please refer to the generic AlphaLISA *SureFire Ultra* Assay Kits Manual, available from <http://www.perkinelmer.com/category/alpha-surefire-kits>