

Technical Data Sheet

AlphaLISA® SureFire® Ultra™ p-RAB10 (Thr73) Assay Kit

ALSU-PRAB-A500, ALSU-PRAB-A10K, ALSU-PRAB-A50K, ALSU-PRAB-A-HV

Kit Specificity

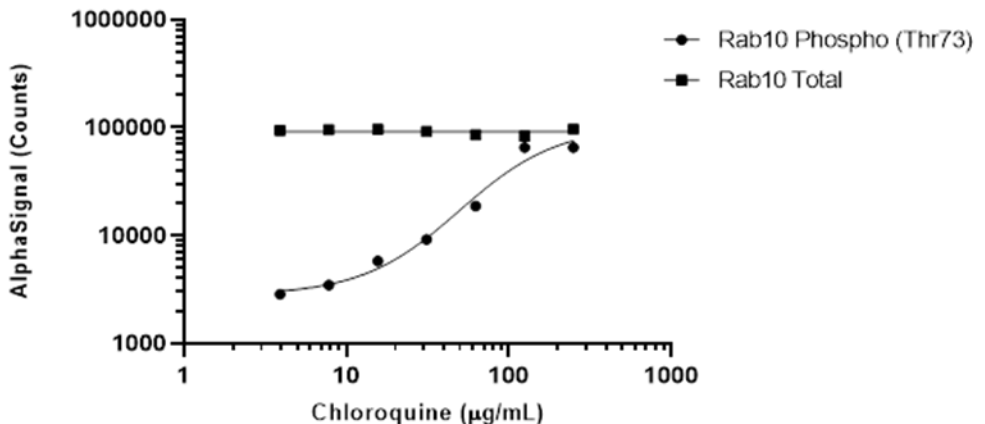
This assay kit contains antibodies which recognize the phospho Thr73 epitope, and a distal epitope on RAB10. The protein detected by this kit corresponds to UniProt ID P61026. RAB10 is also known as Ras-related protein Rab-10. These antibodies recognize RAB10 of human and mouse origin. Other species should be tested on a case-by-case basis.

Control Lysate Information

Positive Control Lysate: Prepared from A549 cells, cultured to confluence in T175 flasks in 10% FBS containing medium, then treated with 250 µg/mL chloroquine for 5 hours and lysed with 10 mL of 1X *SureFire Ultra* Lysis Buffer.

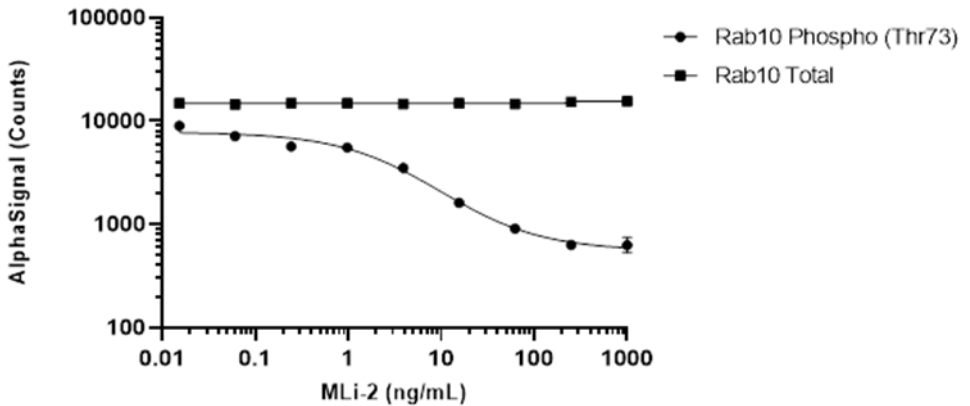
Representative Data

Data obtained with a 2-plate, 2-incubation protocol. A549 cells were plated at 40K cells per well in a 96 well plate and incubated overnight. Cells were then treated with chloroquine at the indicated concentrations for 5 hours. Cells were lysed with 1X *SureFire Ultra* Lysis Buffer and assayed separately for Total and Phospho (Thr73) RAB10, using respective *SureFire Ultra* assay kits. Equivalent to approximately 4000 cells/datapoint.



Technical Data Sheet

Data obtained with a 2-plate, 2-incubation protocol. RAW cells were plated at 80K cells per well in a 96 well plate and incubated overnight. Cells were then treated with MLI-2 at the indicated concentrations in the presence of 50 µg/mL chloroquine for 5 hours. Cells were lysed with 1X *SureFire Ultra* Lysis Buffer and assayed separately for Total and Phospho (Thr73) RAB10, using respective *SureFire Ultra* assay kits. Equivalent to approximately 8000 cells/datapoint.



For more information and detailed protocols, please refer to the generic AlphaLISA *SureFire Ultra* Assay Kits Manual, available from <http://www.perkinelmer.com/category/alpha-surefire-kits>