

# Technical Data Sheet

## AlphaLISA® SureFire® Ultra™ SLP-76 Total (Mouse/Human) Assay Kit

ALSU-TSLP-B500, ALSU-TSLP-B10K, ALSU-TSLP-B50K, ALSU-TSLP-B-HV

### Kit Specificity

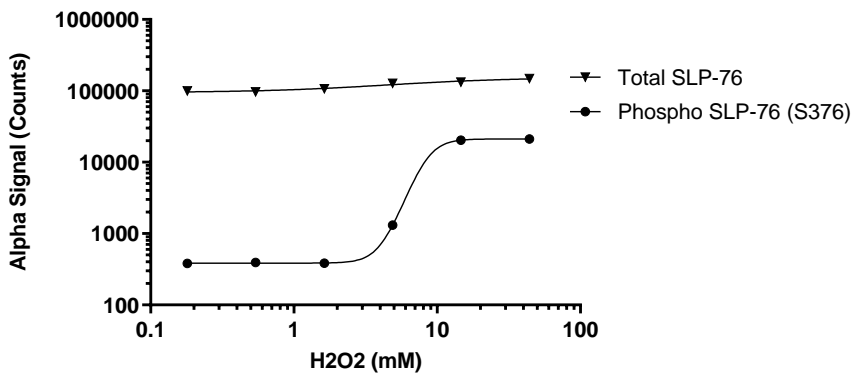
This assay kit contains antibodies which recognize invariant epitopes on SLP-76. The protein detected by this kit corresponds to UniProt ID Q13094. SLP-76 is also known as Lymphocyte cytosolic protein 2. These antibodies recognize SLP-76 of mouse and human origin. Other species should be tested on a case-by-case basis.

### Control Lysate Information

Positive Control Lysate: Prepared from Jurkat cells, cultured in T175 flask to  $1 \times 10^6$  cells/mL in 10% FBS containing medium, then treated with 11 mM  $H_2O_2$  and 50 nM Calyculin A in HBSS for 10 minutes and lysed at  $3.2 \times 10^6$  cells/mL with 1X *SureFire Ultra* Lysis Buffer.

### Representative Data

Data obtained with a 2-plate, 2-incubation protocol. Raw264.7 cells were seeded at 20K cells per well in a 96 well plate and incubated for two days. Cells were treated with  $H_2O_2$  at the indicated concentrations for 10 minutes at 37°C. Cells were lysed with 1X *SureFire Ultra* Lysis Buffer and assayed for Total and Phospho (Ser376) SLP-76 in separate wells of an assay plate with respective *SureFire Ultra* kits. Equivalent to approximately 4,000 cells/datapoint.



For more information and detailed protocols, please refer to the generic AlphaLISA *SureFire Ultra* Assay Kits Manual, available from <http://www.perkinelmer.com/category/alpha-surefire-kits>